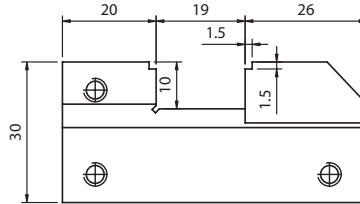
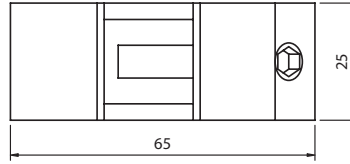
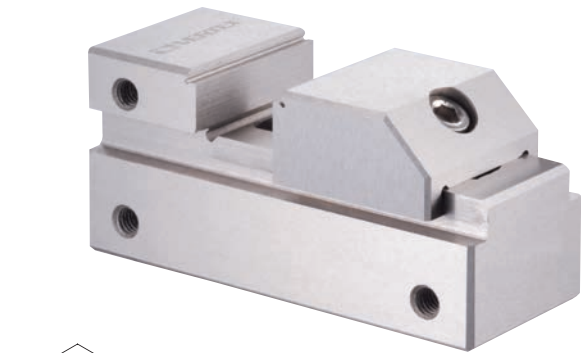




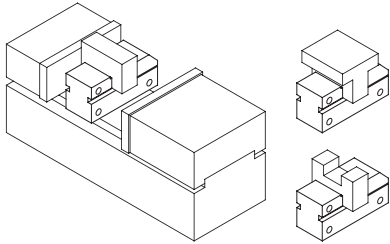
Tool Maker Vise (STAINLESS)



VERTEX
MINI TYPE FOR EDM



Tool makers vise of mini type which can be put in a bigger vise to process the small and precise workpiece. Also it can be used in an E.D.M. machine and grinding machine.
Squareness and parallelism: within $\pm 0.003 / 100$ mm



ORDER NO.	MATERIAL	LENGHT	WIDTH	JAW OPENING	JAW HEIGHT	HARDEN	WEIGHT (kgs)	CODE NO.
VSTV-10V	SUS 440	65	25	19	10	HRC 56°-58°	0.3	2008-070

TOOL MAKER VISE

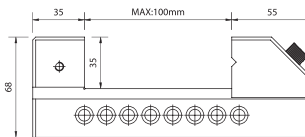
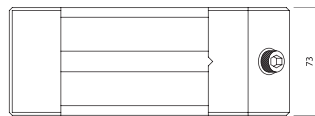
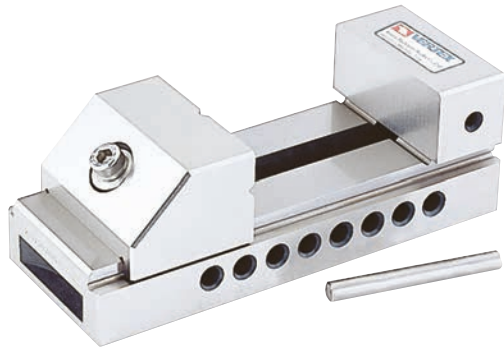


Tool Maker Vise (STAINLESS)

ORDER NO.	WEIGHT (kgs)	CODE NO.
VBST-30	4.5	2008-075

Material: SUS 440
Hardness: HRC 58°~60°
Squareness: Within 0.005 / 100 mm

MINI TYPE FOR EDM
Unit:mm

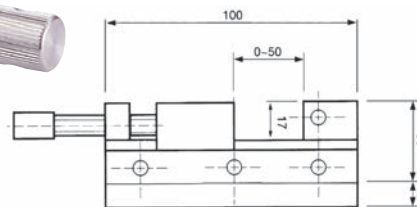
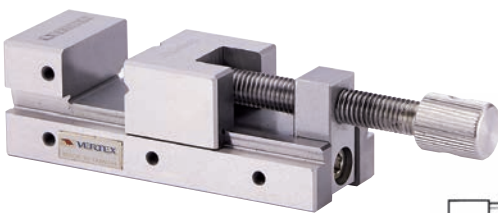


TOLERANCE	
A	± 0.004 mm
B	± 0.005 mm
C	± 0.005 mm
D	± 0.005 mm
E	± 0.005 mm
F	± 0.005 mm
G	± 0.005 mm



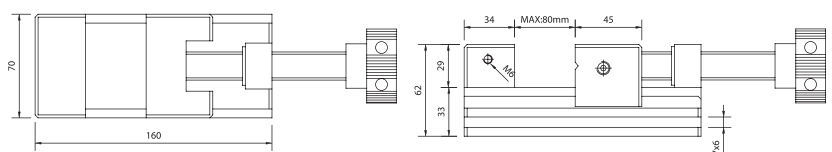
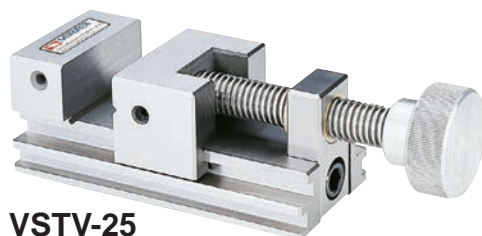
Tool Maker Vise (STAINLESS)

FOR EDM



VSTV-20

- Material: SUS 440
- Hardness: HRC 56°
- Squareness: Within 0.005 / 100 mm
- It was made by tool steel of stainless steel system and was precision ground after hardened by heat treatment. So, it will not be rusted even permeation.
- The vise can clamp workpiece by moveable Jaw without lifting. It is easier and convenient for processing small workpieces.



VSTV-25

ORDER NO.	MATERIAL	LENGHT	WIDTH	JAW OPENIG	JAW HEIGHT	HARDEN	WEIGHT (kgs)	CODE NO.
VSTV-20	SUS440	100	35	50	17	HRC56°	1.2	2008-079
VSTV-25		160	62	80	29		4.4	2008-080