

## Surface and thickness planer ADH 26C (230 V)



### Article number ▼

5904026

### Brand ▼

Holzstar

### Availability ▼

In stock  
Immediate delivery

### Catalog directory ▼

Woodworking machinery » Planers »  
Surface and thickness planers » Surface  
and thickness planer ADH

### Purchase ▼


Minimum 1 pc(s).



### Shipping informations ▼

Packaging Metrics		Weights		Delivery		Other	
Length	1,130 mm	Gross	200 kg	Delivery	Carrier	DualUse	✘
Width	750 mm	Net	170 kg	Content	1 pc(s).	SCIP	n/a
Height	970 mm					SVHC	No

### Root data ▼

Country of origin	EAN	Custom number	Quantity unit
 China	4036351248903	84659200	pc(s).

### Description ▼

- For angular joining (90 °) and straightforward dressing of solid wood boards, planks and strips
- Simple and precise adjustment of the chip removal in dimensionally accurate thickness planing
- Automatic workpiece feed
- Easily adjustable aluminum dressing fence, tiltable from 90 ° to + 45 °
- Large dimensioned dressing table made of ribbed die-cast aluminum
- Large thick cast iron table with ground surface
- Integrated, foldable chip extractor hood

### Equipment:

Simultaneous opening of the dressing tables

- Simultaneous folding up of the dressing tables with spring support for a quick and easy changeover for thickness planing in seconds

Fixed suction hood

- Thanks to the fixed suction hood, it is no longer necessary to change the suction hose during the conversion
- time-saving

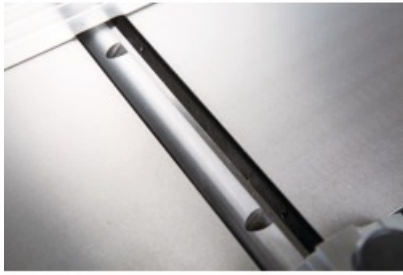
The table height adjustment is easy and convenient via a handwheel

## Media informations

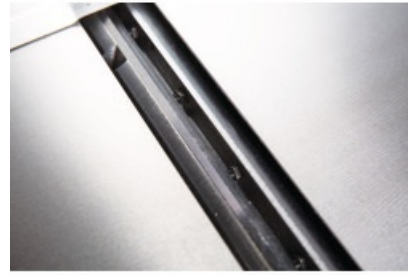


Equipped for thickening

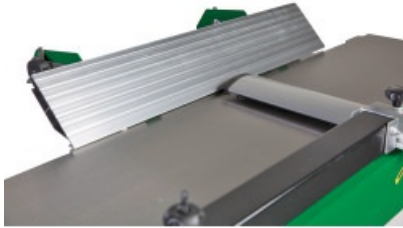




The integrated suction connection ensures a clear view when dressing / planing



Adjustment of chip removal via control lever



Thick table adjustment via handwheel, scale and numeric display



## Technical data

Dimensions and weights			
Length (product) approx.	1120 mm	Width/depth (product) approx.	630 mm
Height (product) approx.	960 mm	Net weight approx.	170 kg
Jointing			
Infeed table length	1120 mm	Infeed table width	275 mm
Working height	830 mm	Max. cutting depth of joints	3 mm
Planing stop pivoting range	90 – 45 °		
Extraction port			
Extraction port diameter thickness	100 mm	Extraction port diameter joints	100 mm

Thickness			
Thickening table length	545 mm	Thickening table width	258 mm
Working height min. thickness	5 mm	Working height max. thickness	225 mm
Max. cutting depth thickness	3 mm		
Electrical Data			
Drive motor output	1.7 kW	Absorbed power drive motor	2.3 kW
Supply voltage	230 V	Mains frequency	50 Hz
Planing knife shaft			
Planing shaft type	Strip planer blade shaft	Planing shaft diameter	70 mm
Number of planing blades	3	Planing shaft speed	5200 min <sup>-1</sup>
Max. planing width	258 mm		
Feed			
Feed speed	5.5 m/min		

## Accessories ▼



### Replacement set planer knife for ADH 26C 260 x 25 x 3.15 mm HSS (3 pieces)



**Article number** ▼  
5914026

**Availability** ▼  
In stock  
Immediate delivery

**Purchase** ▼  
Minimum 1 Set (3  
pc(s).)

**Price informations** ▼



### Planing knife adjustment gauge

For adjusting the exact cutting overstand when changing strip  
planer knives



**Article number** ▼  
5914025

**Availability** ▼  
In stock  
Immediate delivery

**Purchase** ▼  
Minimum 1 pc(s).

**Price informations** ▼

Prices on this data sheet are recommended retail prices, subject to change, in €, plus VAT at the statutory rate, plus packaging, shipping, transport, unloading, assembly and, if applicable, instruction costs. Sales prices of the dealers can deviate. No liability is accepted for printing errors, mistakes or incorrect presentation. Technical and optical changes are reserved. Illustration partly with optional accessories.