

Center lathe and center lathe

OPTIturn TH 6620D

Leading and traction spindle lathes, which are characterized by high flexibility, precision and cost-effectiveness. With digital position indicator DPA 21 and quick-change steel holder

OPTIMUM[®]
MASCHINEN - GERMANY

Article number ▼

3462210

Brand ▼

Optimum

Catalog directory ▼

Metalworking machines » Lathes conventional » OPTIturn TH 6620D / TH 6630D



Shipping informations ▼

Packaging Metrics		Weights		Delivery		Other	
Length	3,770 mm	Gross	3,835 kg	Delivery	Special transportation	DualUse	✘
Width	1,150 mm	Net	3,345 kg	Content	1 pc(s).	SCIP	n/a
Height	1,840 mm					SVHC	No



Description ▼

- Hardened and ground Z-axis guideway
- Spindle mount Camlock DIN ISO 702-2 No. 8
- Precisely crafted sled
- Handwheels with adjustable fine scale 0.04 / 0.02 mm
- All guides can be adjusted by wedge strips
- Waves and wheels running in oil bath
- Adjustment range upper slide $\pm 90^\circ$
- Guaranteed concentricity of the spindle nose better than 0.015 mm
- Main spindle running in oil bath
- Gear wheels smooth, hardened and ground with 2 adjustable precision tapered roller bearings
- Clear selection lever for switching the feed rates
- Closed design of the rapid-action feed gear
- Gears and shafts hardened and ground in an oil bath in precision bearings
- Handwheels decoupled and tested according to EN 23125
- Two-channel right-left switch tested to EN 23125
- Switch with life cycle calculation, tested according to EN ISO 13849
- Right / left rotation on bed carriage via switching spindle switchable
- Central lubrication in the bed slide
- Coolant device with separate coolant tank with level indicator and oil separator; easy and complete emptying and cleaning according to DIN
- leading spindle
- Emergency stop blow switch, motor protection switch, lockable main switch
- Emergency stop device with foot control
- Safety handwheels with release function in the X-axis
- Tailstock for taper turning ± 10 mm adjustable
- Tailstock quill and handwheel with adjustable fine scaling
- Tailstock crank for position change
- Tailstock quill with two adjustable ratios 1/4 or 1/1 turn
- LED machine lamp
- Fast feed - pushbutton and selector lever for activating the rapid traverse for plan and longitudinal direction for even more efficient work. Does not switch off the entire machine when retracting into the limit switch
- Safety limit switch with positive opening contacts
- Electric engine brake with fast emergency stop - in normal operation fast stop without caster
- Electrics with Siemens components
- Energy chain for gentle line and hose routing
- Quick change steel holder SWH 9-D
- 1 steel holder 41 x 180 type D for square chisel 32 mm

Digital position indicator DPA 21

- Significant reduction in production
- glass scales

Delivery content ▼

- Fixed bezel passage max. \varnothing 150 mm
- Running bezel passage max. \varnothing 130 mm
- machine light
- Reduction sleeve MK 5 / MK 7
- Fixed centering point MK 5
- Fixed center point MK 5, alloyed
- Quick change steel holder 9-D
- Steel holder 41 x 180 type D for square chisels
- Position stop with fine adjustment
- Change gear set
- Quality oil enclosed
- operating tool

Media informations ▼



Control cabinet

- 24 Volt DC power supply
- All contactors and relays from Siemens or Schneider-



Face and longitudinal feed

- Rapid feed - pushbutton and selector lever for activating or deactivating rapid feed for face and longitudinal direction for even more rational working. Does not switch off the entire machine when retracting into the limit switch.



Tailstock

- Tailstock crank for changing the position
- Tailstock quill with two adjustable ratios 1/4 or 1/1 turn



Technical data ▼

Dimensions and weights			
Length (product) approx.	3650 mm	Width/depth (product) approx.	1500 mm
Height (product) approx.	1785 mm	Net weight approx.	3345 kg
Load bearing capacity	1,4 t/m		
Work areas			
Max. height	330 mm	Max. width	2050 mm
Swing diameter above machine bed	660 mm	Swing diameter in bed bridge	900 mm
Swing diameter above planing slide	440 mm	Turning length in bed bridge	250 mm
Bed width	400 mm		
Speed range			
Number of gears	16	Speed range	25 – 1600 min ⁻¹
Fast motion speed			
Rapid motion speed	3800 mm/min	Explanations about rapid motion	Max. 5 min (30 min break)
Electrical Data			
Drive motor output	9 kW	Supply voltage	400 V
Mains frequency	50 Hz		
Cooling lubricant system			
Cooling lubricant system coolant pump output	150 W		
Spindle			
Spindle chuck	Camlock DIN ISO 702-2 No. 8	Spindle bore/rod passage diameter	105 mm
Spindle cone	Ø 113 (cone 1:20) mm	Tool holder max. chuck height	32 mm
Tailstock			
Tailstock chuck	MK 5	Tailstock quill stroke	235 mm
Tailstock quill diameter	90 mm		
Pitches			
Metric pitch	0,45 – 120 mm/rev	Number of metric pitches	54
Imperial pitch	80 – 7/16 Gg/1"	Number of imperial pitches	60
Diametrical pitch	7/8 – 160	Number of diametrical pitches	42

Modular thread pitch	0,25 – 60 mm/rev	Number of modular thread pitches	46
Travel			
Travel upper slide	230 mm	Travel cross slide	368 mm
Travel carriage saddle	1965 mm		
Feed			
Longitudinal feed range	0,044 – 1,48 mm/rev	Number of longitudinal feeds	25
Flat feed range	0,022 – 0,74 mm/rev	Number of flat feeds	25
Electrical connections			
Total rated value	10 kW		

Accessories ▼



OPTIMUM Three-jaw lathe chuck centre clamping

Ø 315 mm Camlock DIN ISO 702-2 No. 8

Article number ▼
3442768

OPTIMUM®
MASCHINEN - GERMANY

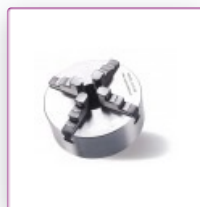


OPTIMUM four-jaw lathe chuck Cast Camlock, centre clamping

Ø 315 mm Camlock DIN ISO 702-2 No. 8

Article number ▼
3442856

OPTIMUM®
MASCHINEN - GERMANY

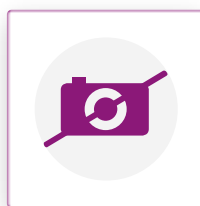


OPTIMUM four-jaw lathe chuck Cast Camlock, single clamping

Ø 315 mm Camlock DIN ISO 702-2 No. 8

Article number ▼
3442888

OPTIMUM®
MASCHINEN - GERMANY

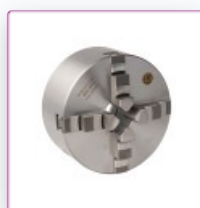


BISON three-jaw lathe chuck Camlock casting centre clamping

Ø 315 mm Camlock DIN ISO 702-2 No. 8

Article number ▼
3450335

OPTIMUM®
MASCHINEN - GERMANY



BISON four-jaw lathe chuck Cast Camlock centric exciting

Ø 315 mm Camlock DIN ISO 702-2 No. 8

Article number ▼
3450385

OPTIMUM®
MASCHINEN - GERMANY



Revolving centering point
MT 5

Article number ▼
3440705

OPTIMUM[®]
MASCHINEN - GERMANY



Revolving centering point
MT 5

Article number ▼
3451005

OPTIMUM[®]
MASCHINEN - GERMANY



Turning tool set
HM 25 mm, 5-part

Article number ▼
3441672

OPTIMUM[®]
MASCHINEN - GERMANY



Turning tool set
HM 25 mm, 5-part
With carbide inserts

Article number ▼
3441623

OPTIMUM[®]
MASCHINEN - GERMANY



Turning tool set
HM 32 mm, 5-part

Article number ▼
3441674

OPTIMUM[®]
MASCHINEN - GERMANY



Internal turning set
5-piece

Article number ▼
3441650

OPTIMUM[®]
MASCHINEN - GERMANY



Center drill set
10tlg. 0.75-4.5 mm HSS

Article number ▼
3203010

OPTIMUM[®]
MASCHINEN - GERMANY



Clamping block set for lathes
25-05

Article number ▼
3440655

OPTIMUM[®]
MASCHINEN - GERMANY



Face plate
Ø 480 mm Camlock DIN ISO 702-2 No. 8

Article number ▼
3442982

OPTIMUM[®]
MASCHINEN - GERMANY



Collet chuck
5C - No. 8

Article number ▼
3441558

OPTIMUM[®]
MASCHINEN - GERMANY



Collet set
SPC 5C

Article number ▼
3441509

OPTIMUM[®]
MASCHINEN - GERMANY



Revolving centering point
MT 3

Article number ▼
3440733

OPTIMUM[®]
MASCHINEN - GERMANY



Vibration damper machine foot
SE 85

Article number ▼
3352982

OPTIMUM[®]
MASCHINEN - GERMANY



Leveling plate
SE 3

Article number ▼
3381018

OPTIMUM[®]
MASCHINEN - GERMANY