

Center lathe and center lathe

OPTIturn TH 5620V

Heavy-duty center-turning lathe, which is characterized by high flexibility, precision and cost-effectiveness. With Siemens Inverter Vario drive

OPTIMUM[®]
MASCHINEN - GERMANY

Article number ▼

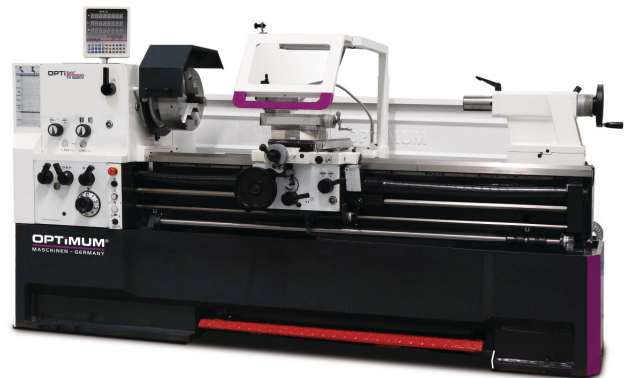
3462175

Brand ▼

Optimum

Catalog directory ▼

Metalworking machines » Lathes conventional » OPTIturn TH 5620V



Shipping informations ▼

Packaging Metrics		Weights		Delivery		Other	
Length	3,400 mm	Gross	2,980 kg	Delivery	Special transportation	DualUse	✘
Width	1,150 mm	Net	2,560 kg	Content	1 pc(s).	SCIP	n/a
Height	1,650 mm					SVHC	No



Description ▼

- Hardened and ground Z-axis guideway
- Spindle mount Camlock DIN ISO 702-2 No. 8
- Precisely crafted sled
- Handwheels with adjustable fine scale 0.04 / 0.02 mm
- All guides can be adjusted by wedge strips
- Waves, wheels and main spindle running in oil bath
- Adjustment range upper slide $\pm 90^\circ$
- Guaranteed concentricity of the spindle nose better than 0.015 mm
- Gear wheels smooth, hardened and ground with 2 adjustable precision tapered roller bearings
- Clear selection lever for switching the feed rates
- Closed design of the rapid-action feed gear
- Gears and shafts hardened and ground in an oil bath in precision bearings
- Handwheels decoupled and tested according to EN 23125
- Two-channel right-left switch tested to EN 23125
- Switch with life cycle calculation, tested according to EN ISO 13849
- Right / left rotation on bed carriage via switching spindle switchable
- Central lubrication in the bed slide
- Leading spindle
- Emergency stop blow switch, motor protection switch, lockable main switch
- Emergency stop device with foot control
- Safety handwheels with release function in the X and Z axis
- Tailstock for taper turning ± 10 mm adjustable
- Tailstock quill and hand wheel with adjustable fine scale 0.025 mm
- Fast, easy and tool-free adjustment by means of a clamping lever
- Strongly ribbed prism bed, induction hardened and precision ground from gray cast iron
- Coolant device with separate coolant tank with level indicator and oil separator; easy and complete emptying and cleaning according to DIN
- LED machine lamp in chip protection
- Two gear stages
- Spindle bore / rod passage $\varnothing 105$ mm
- Siemens Sinamics Frequency Inverter / Safety Integrated
- Electrics with Siemens components
- Energy chain for gentle line and hose routing
- Adjustable scale of the threaded clock
- Quick change steel holder SWH 7-C
- 1 steel holder 32 x 150 type D for square chisel 25 mm
- Digital position indicator DPA 21
- Glass scales

Delivery content ▼

- Reduction sleeve MK7 / MK5
- Fixed centering point MK 5
- Revolving Zones MK5
- Fixed bezel passage \varnothing max. 165 mm
- Running bezel passage \varnothing max. 95 mm
- **Quick change tool holder SWH 7-C**
- **Steel holder 32 x 150 type D for square chisels**
- Coolant system
- machine lamp
- Change gear kit
- operating tool

Note: The machines are delivered without oil
Do not forget spin food

Media informations ▼



Figure shows OPTiturn TU 5620V with optional quality chuck from OPTIMUM



Siemens SINAMICS G120D inverter



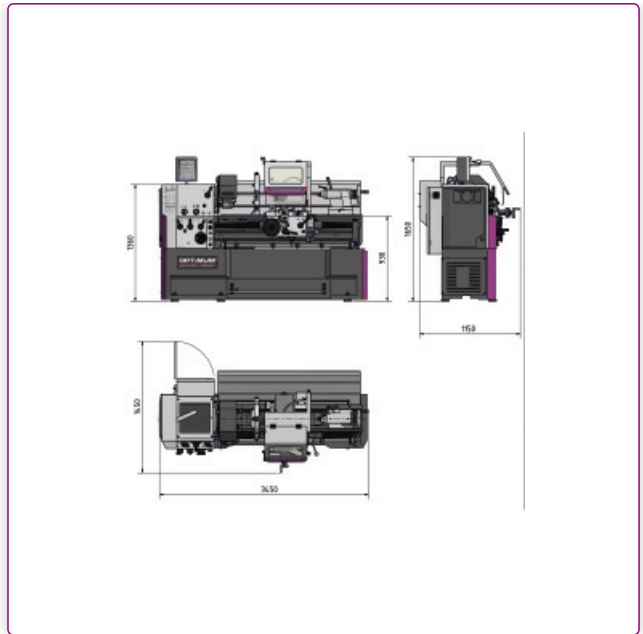
Control cabinet

- 24 Volt DC power supply
- All contactors and relays from Siemens or Schneider



Dig. position indicator DPA 21

- User-friendly membrane keypad
- Significant reduction of production times
- Sensor for recording the spindle speeds



Quick-change steel holder SWH 5-B

- in standard scope of delivery
- Steel holder 25 x 120 type D for square chisel 25 mm in standard scope of delivery

Technical data ▼

Dimensions and weights			
Length (product) approx.	3450 mm	Width/depth (product) approx.	1150 mm
Height (product) approx.	1650 mm	Net weight approx.	2560 kg
Work areas			
Max. height	280 mm	Max. width	1910 mm
Swing diameter above machine bed	560 mm	Swing diameter in bed bridge	790 mm
Swing diameter above planing slide	355 mm	Turning length in bed bridge	170 mm
Bed width	350 mm		
Speed range			
Speed control	electronically adjustable	Number of gears	2
Speed range	25 – 1600 min ⁻¹		
Electrical Data			
Drive motor output	7,5 kW	Supply voltage	400 V
Mains frequency	50 Hz		
Cooling lubricant system			
Cooling lubricant system coolant pump output	125 W		
Standards and certifications			
Standard	DIN EN 55011	EMC level	C3
Spindle			
Spindle chuck	Camlock DIN ISO 702-2 No. 8	Spindle bore/rod passage diameter	105 mm
Spindle cone	Ø 113 (cone 1:20) mm	Tool holder max. chuck height	25 mm
Tailstock			
Tailstock chuck	MK 5	Tailstock quill stroke	180 mm
Tailstock quill diameter	75 mm		

Pitches			
Metric pitch	0,1 – 14 mm/rev	Number of metric pitches	47
Imperial pitch	112 – 2 Gg/1"	Number of imperial pitches	60
Diametrical pitch	4 – 112 DPI	Number of diametrical pitches	50
Modular thread pitch	0,1 – 7 mm/rev	Number of modular thread pitches	34
Travel			
Travel upper slide	130 mm	Travel cross slide	316 mm
Travel carriage saddle	1710 mm		
Feed			
Longitudinal feed range	0,031 – 1,7 mm/rev	Number of longitudinal feeds	42
Flat feed range	0,014 – 0,784 mm/rev	Number of flat feeds	42
Electrical connections			
Total rated value	8.5 kW		

Accessories ▼



OPTIMUM Three-jaw lathe chuck centre clamping Ø 315 mm Camlock DIN ISO 702-2 No. 8

Article number ▼
3442768

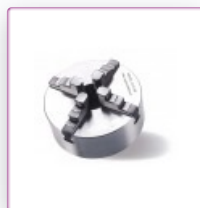
OPTIMUM[®]
MASCHINEN - GERMANY



OPTIMUM four-jaw lathe chuck Cast Camlock, centre clamping Ø 315 mm Camlock DIN ISO 702-2 No. 8

Article number ▼
3442856

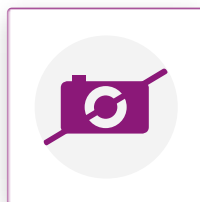
OPTIMUM[®]
MASCHINEN - GERMANY



OPTIMUM four-jaw lathe chuck Cast Camlock, single clamping Ø 315 mm Camlock DIN ISO 702-2 No. 8

Article number ▼
3442888

OPTIMUM[®]
MASCHINEN - GERMANY



BISON three-jaw lathe chuck Camlock casting centre clamping Ø 315 mm Camlock DIN ISO 702-2 No. 8

Article number ▼
3450335

OPTIMUM[®]
MASCHINEN - GERMANY



BISON four-jaw lathe chuck Cast Camlock centric exciting

Ø 315 mm Camlock DIN ISO 702-2 No. 8

Article number ▼
3450385

Availability ▼
In stock
Immediate delivery

Purchase ▼
Minimum 1 pc(s).

Price informations ▼

OPTIMUM®
MASCHINEN - GERMANY



Face plate

Ø 480 mm Camlock DIN ISO 702-2 No. 8

Article number ▼
3442982

OPTIMUM®
MASCHINEN - GERMANY



Revolving centering point MT 5

Article number ▼
3440705

OPTIMUM®
MASCHINEN - GERMANY



Revolving centering point MT 5

Article number ▼
3451005

OPTIMUM®
MASCHINEN - GERMANY



Spare steel holder 35 x 160 type H

Article number ▼
3384326

OPTIMUM®
MASCHINEN - GERMANY



Spare steel holder 32 x 150 type D

Article number ▼
3384308

OPTIMUM®
MASCHINEN - GERMANY



Turning tool set HM 32 mm, 5-part

Article number ▼
3441674

OPTIMUM®
MASCHINEN - GERMANY



Position stop with fine adjustment
for lathe TH56

Article number ▼
3444023

OPTIMUM[®]
MASCHINEN - GERMANY



Turning tool set
HM 20 mm, 5-part

Article number ▼
3441670

OPTIMUM[®]
MASCHINEN - GERMANY



Turning tool set
HM 20 mm, 5-part

Article number ▼
3441617

OPTIMUM[®]
MASCHINEN - GERMANY



Internal turning set
5-piece

Article number ▼
3441650

OPTIMUM[®]
MASCHINEN - GERMANY



Center drill set
10tlg. 0.75-4.5 mm HSS

Article number ▼
3203010

OPTIMUM[®]
MASCHINEN - GERMANY



Clamping block set for lathes
20-05

Article number ▼
3440654

OPTIMUM[®]
MASCHINEN - GERMANY



Collet chuck
5C - No. 8

Article number ▼
3441558

OPTIMUM[®]
MASCHINEN - GERMANY



Collet set
SPC 5C

Article number ▼
3441509

OPTIMUM[®]
MASCHINEN - GERMANY



Revolving centering point
MT 3

Article number ▼
3451003

OPTIMUM[®]
MASCHINEN - GERMANY



Leveling plate
SE 3

Article number ▼
3381018

OPTIMUM[®]
MASCHINEN - GERMANY



Vibration damper machine foot
SE 85

Article number ▼
3352982

OPTIMUM[®]
MASCHINEN - GERMANY