

## Center lathe and center lathe

### OPTIturn TH 5620D

Heavy-duty center lathes and drawbar lathes that are characterized by high flexibility, precision and economy. With digital position indicator DPA 21 and quick-change steel holder.

**OPTIMUM**<sup>®</sup>  
MASCHINEN - GERMANY

#### Article number ▼

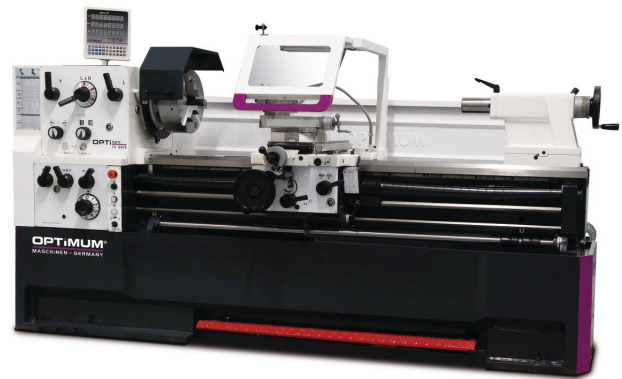
3462170

#### Brand ▼

Optimum

#### Catalog directory ▼

Metalworking machines » Lathes  
conventional » OPTIturn TH 5615D / TH  
5620D / TH 5630D



#### Shipping informations ▼

Packaging Metrics		Weights		Delivery		Other	
Length	3,400 mm	Gross	2,980 kg	Delivery	Special transportation	DualUse	✘
Width	1,150 mm	Net	2,560 kg	Content	1 pc(s).	SCIP	n/a
Height	1,650 mm					SVHC	No



## Description ▼

- Hardened and ground Z-axis guideway
- Spindle mount Camlock DIN ISO 702-2 No. 8
- Precisely crafted sled
- Handwheels with adjustable fine scale 0.04 / 0.02 mm
- All guides can be adjusted by wedge strips
- Waves and wheels running in oil bath
- Adjustment range upper slide  $\pm 90^\circ$
- Guaranteed concentricity of the spindle nose better than 0.015 mm
- Main spindle running in oil bath
- Gear wheels smooth, hardened and ground with 2 adjustable precision tapered roller bearings
- Clear selection lever for switching the feed rates
- Closed design of the rapid-action feed gear
- Gears and shafts hardened and ground in an oil bath in precision bearings
- Handwheels decoupled and tested according to EN 23125
- Two-channel right-left switch tested to EN 23125
- Switch with life cycle calculation, tested according to EN ISO 13849
- Right / left rotation on bed carriage via switching spindle switchable
- Central lubrication in the bed slide
- Leading spindle
- Emergency stop blow switch, motor protection switch, lockable main switch
- Emergency stop device with foot control
- Safety handwheels with release function in the X and Z axis
- Tailstock for taper turning  $\pm 10$  mm adjustable
- Tailstock quill and hand wheel with adjustable fine scale 0.025 mm
- Fast, easy and tool-free adjustment by means of a clamping lever
- Strongly ribbed prism bed, induction hardened and precision ground from gray cast iron
- Coolant device with separate coolant tank with level indicator and oil separator; easy and complete emptying and cleaning according to DIN
- LED machine lamp in chip protection
- Electrics with Siemens components
- Energy chain for gentle line and hose routing
- Adjustable scale of the threaded clock
- Quick change steel holder SWH 7-C
- 1 steel holder 32 x 150 type D for square chisel 25 mm

## Delivery content ▼

- Fixed bezel passage max.  $\varnothing$  165 mm
- Running bezel passage max.  $\varnothing$  95 mm
- LED machine light
- TH 5615D-TH 5630D: Reduction sleeve MK 7 / MK 5
- TH 5620V: Reduction sleeve  $\varnothing$  113 mm / MK 5
- Fixed centering point MK 5
- Fixed and revolving centering point MK 5
- Quick change steel holder 7-C
- Steel holder 32 x 150 type D for square chisels
- Threading gauge
- Initial machine filling with quality oil
- Change gear set
- operating tool

**Do not forget the lathe chuck!**

## Media informations ▼



Picture shows TU 5615D with optional lathe chuck



**Quick-change steel holder SWH 7-C**

- in standard scope of delivery
- Steel holder 32 x 130 type D for square chisel 25 mm



**LED machine lamp**

- in chip protection



**Control cabinet**

- 24 Volt DC power supply
- All contactors and relays from Siemens or Schneider



**Fig. position indicator DPA 21**

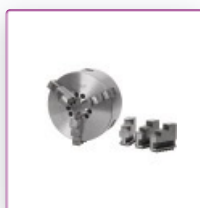
- User-friendly membrane keypad
- Significant reduction of production times
- Sensor for recording the spindle speeds

### Technical data ▼

Dimensions and weights			
Length (product) approx.	3450 mm	Width/depth (product) approx.	1150 mm
Height (product) approx.	1650 mm	Net weight approx.	2560 kg
Work areas			
Max. height	280 mm	Max. width	1910 mm
Swing diameter above machine bed	560 mm	Swing diameter in bed bridge	790 mm
Swing diameter above planing slide	355 mm	Turning length in bed bridge	170 mm
Bed width	350 mm		
Speed range			
Number of gears	12	Speed range	25 – 1600 min <sup>-1</sup>
Electrical Data			
Drive motor output	7,5 kW	Supply voltage	400 V
Mains frequency	50 Hz		
Cooling lubricant system			
Cooling lubricant system coolant pump output	125 W		
Spindle			
Spindle chuck	Camlock DIN ISO 702-2 No. 8	Spindle bore/rod passage diameter	80 mm
Spindle cone	MT 7	Tool holder max. chuck height	25 mm
Tailstock			
Tailstock chuck	MK 5	Tailstock quill stroke	180 mm
Tailstock quill diameter	75 mm		
Pitches			
Metric pitch	0,2 – 14 mm/rev	Number of metric pitches	47
Imperial pitch	112 – 2 Gg/1"	Number of imperial pitches	60

Diametrical pitch	4 – 112 DPI	Number of diametrical pitches	50
Modular thread pitch	0,1 – 7 mm/rev	Number of modular thread pitches	34
<b>Travel</b>			
Travel upper slide	130 mm	Travel cross slide	316 mm
Travel carriage saddle	1710 mm		
<b>Feed</b>			
Longitudinal feed range	0,059 – 1,646 mm/rev	Number of longitudinal feeds	35
Flat feed range	0,020 – 0,573 mm/rev	Number of flat feeds	35
<b>Electrical connections</b>			
Total rated value	8.5 kW		

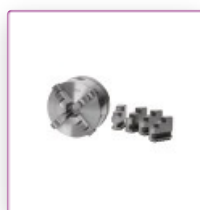
## Accessories ▼



### OPTIMUM Three-jaw lathe chuck centre clamping Ø 315 mm Camlock DIN ISO 702-2 No. 8

Article number ▼  
3442768

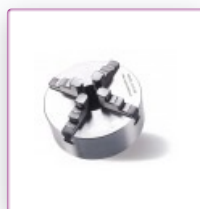
**OPTIMUM**<sup>®</sup>  
MASCHINEN - GERMANY



### OPTIMUM four-jaw lathe chuck Cast Camlock, centre clamping Ø 315 mm Camlock DIN ISO 702-2 No. 8

Article number ▼  
3442856

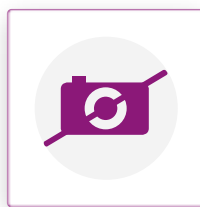
**OPTIMUM**<sup>®</sup>  
MASCHINEN - GERMANY



### OPTIMUM four-jaw lathe chuck Cast Camlock, single clamping Ø 315 mm Camlock DIN ISO 702-2 No. 8

Article number ▼  
3442888

**OPTIMUM**<sup>®</sup>  
MASCHINEN - GERMANY



### BISON three-jaw lathe chuck Camlock casting centre clamping Ø 315 mm Camlock DIN ISO 702-2 No. 8

Article number ▼  
3450335

**OPTIMUM**<sup>®</sup>  
MASCHINEN - GERMANY



### BISON four-jaw lathe chuck Cast Camlock centric exciting Ø 315 mm Camlock DIN ISO 702-2 No. 8

Article number ▼  
3450385

**OPTIMUM**<sup>®</sup>  
MASCHINEN - GERMANY



### Face plate

Ø 480 mm Camlock DIN ISO 702-2 No. 8

Article number ▼

3442982

**OPTIMUM**<sup>®</sup>  
MASCHINEN - GERMANY



### Revolving centering point

MT 5

Article number ▼

3440705

**OPTIMUM**<sup>®</sup>  
MASCHINEN - GERMANY



### Revolving centering point

MT 5

Article number ▼

3451005

**OPTIMUM**<sup>®</sup>  
MASCHINEN - GERMANY



### Spare steel holder

35 x 160 type H

Article number ▼

3384326

**OPTIMUM**<sup>®</sup>  
MASCHINEN - GERMANY



### Spare steel holder

32 x 150 type D

Article number ▼

3384308

**OPTIMUM**<sup>®</sup>  
MASCHINEN - GERMANY



### Turning tool set

HM 32 mm, 5-part

Article number ▼

3441674

**OPTIMUM**<sup>®</sup>  
MASCHINEN - GERMANY



### Position stop with fine adjustment for lathe TH56

Article number ▼

3444023

**OPTIMUM**<sup>®</sup>  
MASCHINEN - GERMANY



**Turning tool set**  
HM 20 mm, 5-part

Article number ▼  
3441670

**OPTIMUM®**  
MASCHINEN - GERMANY



**Turning tool set**  
HM 20 mm, 5-part

Article number ▼  
3441617

**OPTIMUM®**  
MASCHINEN - GERMANY



**Internal turning set**  
5-piece

Article number ▼  
3441650

**OPTIMUM®**  
MASCHINEN - GERMANY



**Center drill set**  
10tlg. 0.75-4.5 mm HSS

Article number ▼  
3203010

**OPTIMUM®**  
MASCHINEN - GERMANY



**Clamping block set for lathes**  
20-05

Article number ▼  
3440654

**OPTIMUM®**  
MASCHINEN - GERMANY



**Collet chuck**  
5C - No. 8

Article number ▼  
3441558

**OPTIMUM®**  
MASCHINEN - GERMANY



**Collet set**  
SPC 5C

Article number ▼  
3441509

**OPTIMUM®**  
MASCHINEN - GERMANY



### Vibration damper machine foot

SE 85

Article number ▼

3352982

**OPTIMUM®**  
MASCHINEN - GERMANY



### Leveling plate

SE 3

Article number ▼

3381018

**OPTIMUM®**  
MASCHINEN - GERMANY