

Center lathe and center lathe

OPTIturn TH 4210D

Precise head and spindle lathes, sophisticated technology, complete equipment, easy to operate

Article number ▼

3462055

Brand ▼

Optimum

Catalog directory ▼

Metalworking machines » Lathes
conventional » OPTIturn TH 4210 / TH
4210D / TH 4210V / TH 4215D

OPTIMUM[®]
MASCHINEN - GERMANY



Shipping informations ▼

Packaging Metrics		Weights		Delivery		Other	
Length	2,060 mm	Gross	1,352 kg	Delivery	Carrier	DualUse	✘
Width	900 mm	Net	1,160 kg	Content	1 pc(s).	SCIP	n/a
Height	1,650 mm					SVHC	No



Description ▼

- Hardened and ground Z-axis guideway
- Spindle mount Camlock DIN ISO 702-2 No. 6
- Precisely crafted sled
- Handwheels with adjustable fine scale 0.04 / 0.02 mm
- Quadruple tool holder
- All guides can be adjusted by wedge strips
- Adjustment range upper slide $\pm 90^\circ$
- Guaranteed concentricity of the spindle nose better than 0.015 mm
- Main spindle running in oil bath
- Gear wheels smooth, hardened and ground with 2 adjustable precision tapered roller bearings
- Handwheels decoupled and tested according to EN 23125
- Two-channel right-left switch tested to EN 23125
- Switch with life cycle calculation, tested according to EN ISO 13849
- All metric pitches in the range of 0.2 to 14 mm / rev and all inch threads in the range of 72 - 2 pitch per inch are adjustable without change of the change gears by lever in the control panel
- Right / left rotation on bed carriage via switching spindle switchable
- Central lubrication in the bed slide
- Substructure and machine bed made of casted Meehanite cast in one piece
- leading spindle
- Emergency stop device with foot control
- Safety handwheels with release function in the X and Z axis
- Tailstock for taper turning ± 10 mm adjustable
- Tailstock quill and hand wheel with adjustable fine scale 0.025 mm
- Fast, easy and tool-free adjustment by means of a clamping lever
- Strongly ribbed prism bed, induction hardened and precision ground from gray cast iron
- Coolant device with separate coolant tank with level indicator and oil separator; easy and complete emptying and cleaning according to DIN
- LED machine lamp in chip protection

Models TH 4210D and TH 4215D with digital position display DPA21

- User-friendly membrane keypad, splash-proof, closed and glare-free
- Glass scales

Delivery content ▼

- Fixed bezel passage $\varnothing 15 - 145$ mm
- Running bezel passage $\varnothing 10 - 75$ mm
- LED machine light
- Reduction sleeve MK 6 / MK 4
- Fixed centering point MK 4
- Change gear set
- Position stop with fine adjustment
- Initial machine filling with quality oil
- operating tool

TH 4210 / TH 4210D / TH 4215D

- Quadruple steel holder max. 20 mm

TH 4210V

- Quick change steel holder 5-B
- Steel holder 25 x 120 type D for square chisels

Do not forget the lathe chuck!

Media informations ▼



Picture shows TH 4210D with optional lathe chuck



Control cabinet

- 24 volt DC power supply
- All contactors and relays from Siemens or Schneider -



Tailstock

- Tailstock for taper turning adjustable ± 10 mm
- Tailstock quill and handwheel with adjustable fine scaling 0.025 mm
- Quick, easy and tool-free adjustment of the tailstock by means of clamping lever



LED machine lamp

- in chip protection



Fig. position indicator DPA 21

- User-friendly membrane keypad
- Significant reduction of production times
- Sensor for recording the spindle speeds

Technical data ▼

Dimensions and weights			
Length (product) approx.	1940 mm	Width/depth (product) approx.	915 mm
Height (product) approx.	1375 mm	Net weight approx.	1162 kg
Work areas			
Max. height	210 mm	Max. width	1000 mm
Swing diameter above machine bed	420 mm	Swing diameter in bed bridge	590 mm
Swing diameter above planing slide	250 mm	Turning length in bed bridge	260 mm
Bed width	250 mm		
Speed range			
Number of gears	16	Speed range	45 – 1800 min-1
Electrical Data			
Drive motor output	4,5 kW	Supply voltage	400 V
Mains frequency	50 Hz		
Cooling lubricant system			
Cooling lubricant system coolant pump output	100 W		
Spindle			
Spindle chuck	Camlock DIN ISO 702-2 No. 6	Spindle bore/rod passage diameter	52 mm
Spindle cone	MT 6	Tool holder max. chuck height	20 mm
Tailstock			
Tailstock chuck	MT 4	Tailstock quill stroke	120 mm
Tailstock quill diameter	50 mm		
Pitches			
Metric pitch	0,2 – 14 mm/rev	Number of metric pitches	39
Imperial pitch	72 – 2 Gg/1"	Number of imperial pitches	45

Diametrical pitch	8 – 44	Number of diametrical pitches	21
Modular thread pitch	0,3 – 3,5 mm/rev	Number of modular thread pitches	18
Travel			
Travel upper slide	140 mm	Travel cross slide	230 mm
Travel carriage saddle	780 mm		
Feed			
Longitudinal feed range	0,05 – 1,7 mm/rev	Number of longitudinal feeds	17
Flat feed range	0,025 – 0,85 mm/rev	Number of flat feeds	17
Electrical connections			
Total rated value	4.6 kW		

Accessories ▼



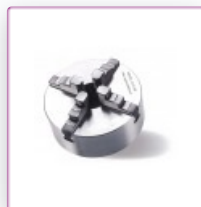
OPTIMUM Three-jaw lathe chuck centre clamping
 Ø 250 mm Camlock DIN ISO 702-2 No. 6
 Article number ▼
 3442765

OPTIMUM®
 MASCHINEN - GERMANY



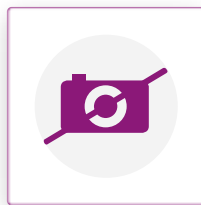
OPTIMUM four-jaw lathe chuck Cast Camlock, centre clamping
 Ø 250 mm Camlock DIN ISO 702-2 No. 6
 Article number ▼
 3442852

OPTIMUM®
 MASCHINEN - GERMANY



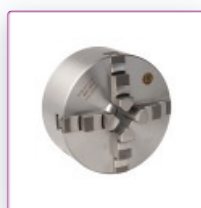
OPTIMUM four-jaw lathe chuck Cast Camlock, single clamping
 Ø 250 mm Camlock DIN ISO 702-2 No. 6
 Article number ▼
 3442884

OPTIMUM®
 MASCHINEN - GERMANY



BISON three-jaw lathe chuck Camlock casting centre clamping
 Ø 250 mm Camlock DIN ISO 702-2 No. 6
 Article number ▼
 3450330

OPTIMUM®
 MASCHINEN - GERMANY



BISON four-jaw lathe chuck Cast Camlock centric exciting
 Ø 250 mm Camlock DIN ISO 702-2 No. 6
 Article number ▼
 3450380

OPTIMUM®
 MASCHINEN - GERMANY



BISON three-jaw lathe chuck steel
Ø 250 mm Camlock DIN ISO 702-2 No. 6

Article number ▼
3450530

OPTIMUM®
MASCHINEN - GERMANY



BISON four-jaw lathe chuck steel Camlock, centric clamping
Ø 250 mm Camlock DIN ISO 702-2 No. 6

Article number ▼
3450580

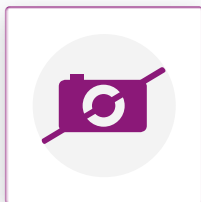
OPTIMUM®
MASCHINEN - GERMANY



Quick change tool kit
SWH 5 - B
Repeat accuracy 0.01 mm

Article number ▼
3384305

OPTIMUM®
MASCHINEN - GERMANY



Factory assembly and adaptation
SWH

Article number ▼
9000400

OPTIMUM®
MASCHINEN - GERMANY



Spare steel holder
25 x 120 type D

Article number ▼
3384306

OPTIMUM®
MASCHINEN - GERMANY



Spare steel holder
32 x 130 type H

Article number ▼
3384324

OPTIMUM®
MASCHINEN - GERMANY



Turning tool set
HM 20 mm, 5-part

Article number ▼
3441670

OPTIMUM®
MASCHINEN - GERMANY



Turning tool set
HM 20 mm, 5-part

Article number ▼
3441617

OPTIMUM®
MASCHINEN - GERMANY



Vibration damper machine foot
SE 85

Article number ▼
3352982

OPTIMUM®
MASCHINEN - GERMANY



Internal turning set
5-piece

Article number ▼
3441650

OPTIMUM®
MASCHINEN - GERMANY



Center drill set
10tlg. 0.75-4.5 mm HSS

Article number ▼
3203010

OPTIMUM®
MASCHINEN - GERMANY



Clamping block set for lathes
20-05

Article number ▼
3440654

OPTIMUM®
MASCHINEN - GERMANY



Face plate
Ø 350 mm Camlock DIN ISO 702-2 No. 6

Article number ▼
3442980

OPTIMUM®
MASCHINEN - GERMANY



Collet chuck
5C - No. 6

Article number ▼
3441556

OPTIMUM®
MASCHINEN - GERMANY



Collet set
SPC 5C

Article number ▼
3441509

OPTIMUM®
MASCHINEN - GERMANY



Revolving centering point
MT 4

Article number ▼
3440704

OPTIMUM®
MASCHINEN - GERMANY



Revolving centering point
MT 4

Article number ▼
3440734

OPTIMUM®
MASCHINEN - GERMANY



Revolving centering point
MT 4

Article number ▼
3451004

OPTIMUM®
MASCHINEN - GERMANY



Leveling plate
SE 2

Article number ▼
3381016

OPTIMUM®
MASCHINEN - GERMANY