

Center lathe and center lathe

OPTIturn TM 4010D

Leading and tensioning spindle lathes impress with their sturdy construction and easy handling. TM 4010D with digital position indicator DPA 21

OPTIMUM[®]
MASCHINEN - GERMANY

Article number ▼

3403045

Brand ▼

Optimum

Catalog directory ▼

Metalworking machines » Lathes
conventional » OPTIturn TM 4010 / TM
4010D



Shipping informations ▼

Packaging Metrics		Weights		Delivery		Other	
Length	1,690 mm	Gross	846 kg	Delivery	Carrier	DualUse	✘
Width	1,900 mm	Net	765 kg	Content	1 pc(s).	SCIP	n/a
Height	860 mm					SVHC	No



Description ▼

- Hardened and ground Z-axis guideway
- Spindle mount Camlock DIN ISO 702-2 No. 5
- Guaranteed concentricity of the spindle nose better than 0.015 mm
- Gears and shafts hardened and ground, running in an oil bath in precision bearings
- Tailstock with hardened and ground quill
- DC 24 Volt - electrics
- All gears of the feed gear made of steel, hardened and ground, shafts on needle bearings All components are lubricated in an oil bath
- Right / left rotation on bed sled switchable
- Safety handwheels with release function in the X and Z axis
- Emergency stop device
- Perfectly concentric Main spindle guarantees high load capacity thanks to mounted precision tapered roller bearings
- Hinged chip compartment for easy chip removal from the front
- Machine base in stable steel construction
- Coolant pump with coolant reservoir and level indicator. Removable container for easy cleaning
- With safety device against simultaneous operation of threading and feed mechanism
- Handwheels, decoupled and tested to EN 23125
- Switch with life cycle calculation tested according to EN ISO 13849
- LED machine lamp in chip protection
- Motor electrically braked
- Three-jaw chuck O 200 mm, No. 5 in the standard scope of delivery
- User-friendly membrane keyboard
- Two-channel right-left switch, tested to EN 23125

TM 4010D

- Digital position indicator DPA21

Delivery content ▼

- Three-jaw lathe chuck Ø 200 mm, no. 5
- Quick change tool holder 3-E
- Fixed steady 7 - 102 mm
- Travelling steady 10 - 60 mm
- Reduction sleeve MT 6 - MT 4
- Fixed centre MT 4
- Machine initially filled with premium grade oil
- Operating tool

Media informations ▼



Control cabinet

- 24 Volt DC power supply
- All contactors and relays from SIEMENS or Schneider



Dig. position indicator DPA 21

- User-friendly membrane keypad
- Significant reduction in production times
- Higher working accuracy
- Error rate is reduced



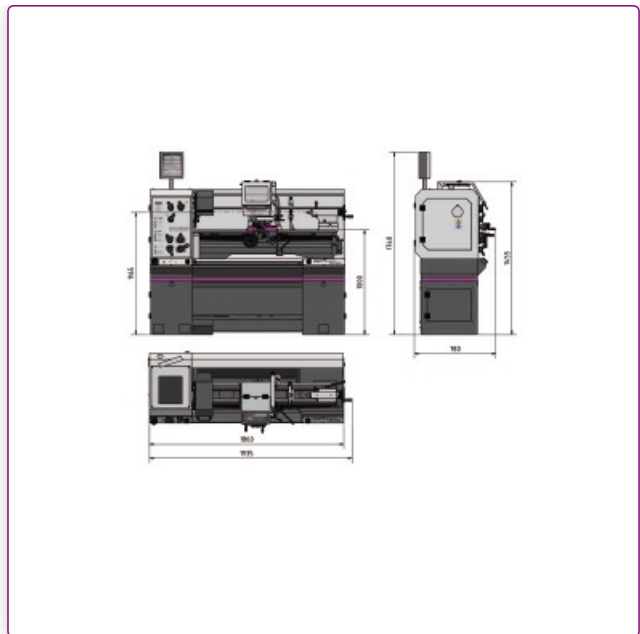
Membrane keypad

- User-friendly membrane keypad with the functions: Machine on, coolant pump, light and direct run



Chip tray

- Extendable
- Easy chip cleaning from the front

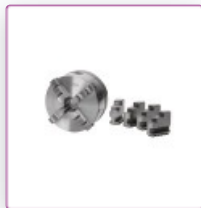


Technical data ▼

Dimensions and weights			
Length (product) approx.	1950 mm	Width/depth (product) approx.	820 mm
Height (product) approx.	1530 mm	Net weight approx.	767 kg
Work areas			
Explanation Swing diameter above planing slide	Please note that when installing third-party lathe chucks or faceplates to achieve the specified technically possible turning diameter, operator modifications are required.	Max. height	200 mm
Max. width	1000 mm	Swing diameter above machine bed	400 mm
Swing diameter above planing slide	250 mm		
Speed range			
Number of gears	8	Speed range	70 – 2000 min ⁻¹
Electrical Data			
Drive motor output	2,2 kW	Supply voltage	400 V
Mains frequency	50 Hz		
Cooling lubricant system			
Cooling lubricant system coolant pump output	100 W		
Spindle			
Spindle chuck	Camlock DIN ISO 702-2 No.5	Spindle bore/rod passage diameter	53 mm
Tailstock			
Tailstock chuck	50 mm	Tailstock quill stroke	110 mm
Pitches			
Metric pitch	0,4 – 7 mm/rev	Imperial pitch	56 – 4 Gg/1"

Travel			
Travel upper slide	98 mm	Travel cross slide	185 mm
Travel carriage saddle	850 mm		
Feed			
Longitudinal feed range	0,014 – 0,38 mm/rev	Flat feed range	0,052 – 1,392 mm/rev
Tool clamping			
Tool holder chuck size	30 mm		
Electrical connections			
Total rated value	2.3 kW		

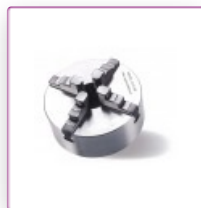
Accessories ▼



OPTIMUM four-jaw lathe chuck Cast Camlock, centre clamping
 Ø 200 mm Camlock DIN ISO 702-2 No. 5

Article number ▼
 3442845

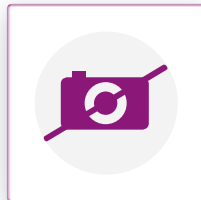
OPTIMUM®
 MASCHINEN - GERMANY



OPTIMUM four-jaw lathe chuck Cast Camlock, single clamping
 Ø 200 mm Camlock DIN ISO 702-2 No. 5

Article number ▼
 3442880

OPTIMUM®
 MASCHINEN - GERMANY



BISON three-jaw lathe chuck Camlock casting centre clamping
 Ø 200 mm Camlock DIN ISO 702-2 No. 5

Article number ▼
 3450315

OPTIMUM®
 MASCHINEN - GERMANY



BISON four-jaw lathe chuck Cast Camlock centric exciting
 Ø 200 mm Camlock DIN ISO 702-2 No. 5

Article number ▼
 3450365

OPTIMUM®
 MASCHINEN - GERMANY



Spare steel holder
 20 x 100 type D

Article number ▼
 3384304

OPTIMUM®
 MASCHINEN - GERMANY



Spare steel holder
30 x 100 type H

Article number ▼
3384322

OPTIMUM[®]
MASCHINEN - GERMANY



Turning tool set
16 mm, 11 parts

Article number ▼
3441604

OPTIMUM[®]
MASCHINEN - GERMANY



Turning tool set
HM 16 mm, 5-part
With carbide inserts

Article number ▼
3441668

OPTIMUM[®]
MASCHINEN - GERMANY



Turning tool set
HM 16 mm, 5-part "Made in Germany"

Article number ▼
3441216

OPTIMUM[®]
MASCHINEN - GERMANY



Turning tool set
HM 16 mm, 5-part

Article number ▼
3441610

OPTIMUM[®]
MASCHINEN - GERMANY



Face plate
Ø 320 mm Camlock DIN ISO 702-2 No. 5

Article number ▼
3442979

OPTIMUM[®]
MASCHINEN - GERMANY



Position stop
Micro

Article number ▼
3441475

OPTIMUM[®]
MASCHINEN - GERMANY



Internal turning set

5-piece

Article number ▼

3441650

OPTIMUM®
MASCHINEN - GERMANY



Clamping block set for lathes

16-05

Article number ▼

3440653

OPTIMUM®
MASCHINEN - GERMANY



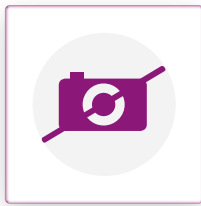
Twist drill HSS with Morse taper

MT 3

Article number ▼

3051003

OPTIMUM®
MASCHINEN - GERMANY



Collet chuck

5C - No. 5

Article number ▼

3441555

OPTIMUM®
MASCHINEN - GERMANY



Collet set

SPC 5C

Article number ▼

3441509

OPTIMUM®
MASCHINEN - GERMANY



Revolving centering point

MT 3

Article number ▼

3440703

OPTIMUM®
MASCHINEN - GERMANY



Revolving centering point

MT 3

Article number ▼

3440733

OPTIMUM®
MASCHINEN - GERMANY



Internal turning set

12 mm

Article number ▼

3441641

OPTIMUM®
MASCHINEN - GERMANY



Center drill set

10tlg. 0.75-4.5 mm HSS

Article number ▼

3203010

OPTIMUM®
MASCHINEN - GERMANY



Clamping block set for lathes

20-05

Article number ▼

3440654

OPTIMUM®
MASCHINEN - GERMANY



Revolving centering point

MT 4

Article number ▼

3451004

OPTIMUM®
MASCHINEN - GERMANY



Vibration damper machine foot

SE 55

Article number ▼

3352981

OPTIMUM®
MASCHINEN - GERMANY



Leveling plate

SE 1

Article number ▼

3381012

OPTIMUM®
MASCHINEN - GERMANY