

## Mechanics lathe

### OPTIturn TH 4010D

Fully equipped mechanic lathes. Convincing in precision and performance. TH 4010D with digital position indicator DPA 21, TH 4010V additionally with Siemens inverter vario drive

#### Article number ▼

3402080

#### Brand ▼

Optimum

#### Catalog directory ▼

Metalworking machines » Lathes conventional » OPTIturn TH 4010 / TH 4010D / TH 4010V

**OPTIMUM**<sup>®</sup>  
MASCHINEN - GERMANY



#### Shipping informations ▼

Packaging Metrics		Weights		Delivery		Other	
Length	1,930 mm	Gross	830 kg	Delivery	Carrier	DualUse	✘
Width	920 mm	Net	700 kg	Content	1 pc(s).	SCIP	n/a
Height	1,700 mm					SVHC	No



## Description ▼

- Hardened and ground Z-axis guideway
- Spindle mount Camlock DIN ISO 702-2 No. 5
- Precisely crafted sled
- Handwheels with adjustable fine scale 0.04 / 0.02 mm
- Quadruple tool holder
- All guides can be adjusted by wedge strips
- Adjustment range upper slide  $\pm 90^\circ$
- Guaranteed concentricity of the spindle nose better than 0.015 mm
- Main spindle running in oil bath
- Gear wheels smooth, hardened and ground
- Gears and shafts hardened and ground, running in an oil bath in precision bearings
- Handwheels decoupled and tested according to EN 23125
- Two-channel right-left switch tested to EN 23125
- Switch with life cycle calculation, tested according to EN ISO 13849
- DC 24 Volt - electrics
- Lockable main switch
- Right / left rotation on bed sled switchable
- Safety handwheels with release function in the X and Z axis
- Tailstock for taper turning  $\pm 10$  mm adjustable
- Tailstock quill and hand wheel with adjustable fine scale 0.025 mm
- Fast, easy and tool-free adjustment by means of a clamping lever
- Strongly ribbed prism bed, induction hardened and precision ground from gray cast iron
- Extractable chip tray with guide rails
- Emergency stop device with foot control
- Machine base with 3 panels (no compartments)
- Coolant system
- LED machine lamp in chip protection

### TH 4010 / TH 4010D:

- Motor protection switch

### TH 4010D / TH 4010V:

#### • Digital position indicator DPA21

- User-friendly membrane keypad, splash-proof, closed and glare-free
- Glass scales

## Delivery content ▼

- Fixed bezel passage  $\varnothing 5 - 85$  mm
- Running bezel passage  $\varnothing 5 - 65$  mm
- LED machine light
- Reduction sleeve MK 6 / MK 3
- Fixed centering points MK 3
- Fixed centering point MK 3, alloyed
- Change gear set
- Initial machine filling with quality oil
- operating tool

### TH 4010 / TH 4010D

- Quadruple steel holder 16 mm

### TH 4010V

- Quick-change steel holder 3-E
- Steel holder 20 x 100 type D for square chisels

**Do not forget the lathe chuck!**

## Media informations



Picture shows TH 4010D with optional lathe chuck



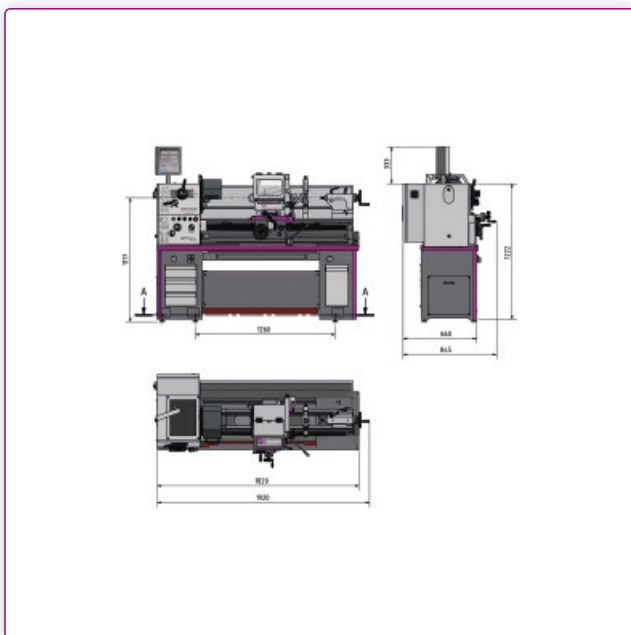
### Tailstock

- Tailstock for taper turning adjustable  $\pm 10$  mm
- Tailstock quill and handwheel with adjustable fine scaling 0.025 mm
- Quick, easy and tool-free adjustment by means of clamping lever



### Dig. position indicator DPA 21

- User-friendly membrane keypad
- Significant reduction in production times
- Higher working accuracy
- Error rate is reduced

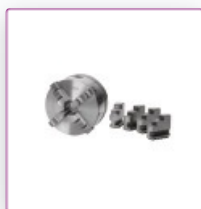


## Technical data

### Dimensions and weights

Length (product) approx.	1920 mm	Width/depth (product) approx.	740 mm
Height (product) approx.	1555 mm	Net weight approx.	737 kg
<b>Work areas</b>			
Max. height	205 mm	Max. width	1000 mm
Swing diameter above machine bed	410 mm	Swing diameter above planing slide	255 mm
Bed width	206 mm		
<b>Speed range</b>			
Number of gears	16	Speed range	45 – 1800 min <sup>-1</sup>
<b>Electrical Data</b>			
Drive motor output	2,4 kW	Supply voltage	400 V
Mains frequency	50 Hz		
<b>Spindle</b>			
Spindle chuck	Camlock DIN ISO 702-2 No. 5	Spindle bore/rod passage diameter	52 mm
Spindle cone	MT 6	Tool holder max. chuck height	16 mm
<b>Tailstock</b>			
Tailstock chuck	MK 3	Tailstock quill stroke	130 mm
Tailstock quill diameter	45 mm		
<b>Pitches</b>			
Metric pitch	0,4 – 7 mm/rev	Number of metric pitches	42
Imperial pitch	70 – 4 Gg/1"	Number of imperial pitches	42
<b>Travel</b>			
Travel X axis	100 mm	Travel Y axis	195 mm
<b>Feed</b>			
Longitudinal feed range	0,043 – 0,653 mm/rev	Number of longitudinal feeds	48
Flat feed range	0,015 – 0,206 mm/rev	Number of flat feeds	48
<b>Tool clamping</b>			
Tool holder chuck size	16 mm		

## Accessories ▼



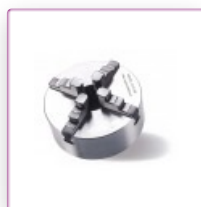
### OPTIMUM four-jaw lathe chuck Cast Camlock, centre clamping

Ø 200 mm Camlock DIN ISO 702-2 No. 5

Article number ▼

3442845

**OPTIMUM**<sup>®</sup>  
MASCHINEN - GERMANY



### OPTIMUM four-jaw lathe chuck Cast Camlock, single clamping

Ø 200 mm Camlock DIN ISO 702-2 No. 5

Article number ▼

3442880

**OPTIMUM**<sup>®</sup>  
MASCHINEN - GERMANY



### **BISON three-jaw lathe chuck Camlock casting centre clamping**

Ø 200 mm Camlock DIN ISO 702-2 No. 5

**Article number** ▼  
3450315

**OPTIMUM®**  
MASCHINEN - GERMANY



### **BISON four-jaw lathe chuck Cast Camlock centric exciting**

Ø 200 mm Camlock DIN ISO 702-2 No. 5

**Article number** ▼  
3450365

**OPTIMUM®**  
MASCHINEN - GERMANY



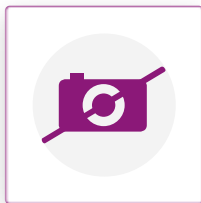
### **Quick change tool kit**

SWH 3 - E

Repeat accuracy 0.01 mm

**Article number** ▼  
3384303

**OPTIMUM®**  
MASCHINEN - GERMANY



### **Factory assembly and adaptation**

SWH

**Article number** ▼  
9000400

**OPTIMUM®**  
MASCHINEN - GERMANY



### **Spare steel holder**

20 x 100 type D

**Article number** ▼  
3384304

**OPTIMUM®**  
MASCHINEN - GERMANY



### **Spare steel holder**

30 x 100 type H

**Article number** ▼  
3384322

**OPTIMUM®**  
MASCHINEN - GERMANY



### **Turning tool set**

HM 20 mm, 5-part

**Article number** ▼  
3441670

**OPTIMUM®**  
MASCHINEN - GERMANY



**Turning tool set**  
HM 20 mm, 5-part

**Article number** ▼  
3441617

**OPTIMUM**<sup>®</sup>  
MASCHINEN - GERMANY



**Turning tool set**  
HM 16 mm, 5-part  
With carbide inserts

**Article number** ▼  
3441668

**OPTIMUM**<sup>®</sup>  
MASCHINEN - GERMANY



**Turning tool set**  
HM 16 mm, 5-part "Made in Germany"

**Article number** ▼  
3441216

**OPTIMUM**<sup>®</sup>  
MASCHINEN - GERMANY



**Turning tool set**  
HM 16 mm, 5-part

**Article number** ▼  
3441610

**OPTIMUM**<sup>®</sup>  
MASCHINEN - GERMANY



**Turning tool set**  
16 mm, 11 parts

**Article number** ▼  
3441604

**OPTIMUM**<sup>®</sup>  
MASCHINEN - GERMANY



**Internal turning set**  
5-piece

**Article number** ▼  
3441650

**OPTIMUM**<sup>®</sup>  
MASCHINEN - GERMANY



**Clamping block set for lathes**  
16-05

**Article number** ▼  
3440653

**OPTIMUM**<sup>®</sup>  
MASCHINEN - GERMANY



### Twist drill HSS with Morse taper

MT 3

Article number ▼

3051003

**OPTIMUM®**  
MASCHINEN - GERMANY



### Collet chuck

5C - No. 5

Article number ▼

3441555

**OPTIMUM®**  
MASCHINEN - GERMANY



### Collet set

SPC 5C

Article number ▼

3441509

**OPTIMUM®**  
MASCHINEN - GERMANY



### Revolving centering point

MT 3

Article number ▼

3440703

**OPTIMUM®**  
MASCHINEN - GERMANY



### Revolving centering point

MT 3

Article number ▼

3440733

**OPTIMUM®**  
MASCHINEN - GERMANY



### Revolving centering point

MT 3

Article number ▼

3451003

**OPTIMUM®**  
MASCHINEN - GERMANY



### Leveling plate

SE 1

Article number ▼


3381012

**OPTIMUM®**  
MASCHINEN - GERMANY



## Vibration damper machine foot

SE 55

Article number 

3352981