

Mechanics lathe

OPTIturn TH 4010

Fully equipped mechanic lathes. Convincing in precision and performance. TH 4010D with digital position indicator DPA 21, TH 4010V additionally with Siemens inverter vario drive

Article number

3402070

Brand

Optimum

Catalog directory

Metalworking machines » Lathes conventional » OPTIturn TH 4010 / TH 4010D / TH 4010V

OPTIMUM[®]
MASCHINEN - GERMANY



Shipping informations

Packaging Metrics		Weights		Delivery		Other	
Length	1,930 mm	Gross	830 kg	Delivery	Carrier	DualUse	✘
Width	920 mm	Net	700 kg	Content	1 pc(s).	SCIP	n/a
Height	1,700 mm					SVHC	No



Description ▼

- Hardened and ground Z-axis guideway
- Spindle mount Camlock DIN ISO 702-2 No. 5
- Precisely crafted sled
- Handwheels with adjustable fine scale 0.04 / 0.02 mm
- Quadruple tool holder
- All guides can be adjusted by wedge strips
- Adjustment range upper slide $\pm 90^\circ$
- Guaranteed concentricity of the spindle nose better than 0.015 mm
- Main spindle running in oil bath
- Gear wheels smooth, hardened and ground
- Gears and shafts hardened and ground, running in an oil bath in precision bearings
- Handwheels decoupled and tested according to EN 23125
- Two-channel right-left switch tested to EN 23125
- Switch with life cycle calculation, tested according to EN ISO 13849
- DC 24 Volt - electrics
- Lockable main switch
- Right / left rotation on bed sled switchable
- Safety handwheels with release function in the X and Z axis
- Tailstock for taper turning ± 10 mm adjustable
- Tailstock quill and hand wheel with adjustable fine scale 0.025 mm
- Fast, easy and tool-free adjustment by means of a clamping lever
- Strongly ribbed prism bed, induction hardened and precision ground from gray cast iron
- Extractable chip tray with guide rails
- Emergency stop device with foot control
- Machine base with 3 panels (no compartments)
- Coolant system
- LED machine lamp in chip protection

TH 4010 / TH 4010D:

- Motor protection switch

Delivery content ▼

- Fixed bezel passage $\varnothing 5 - 85$ mm
- Running bezel passage $\varnothing 5 - 65$ mm
- LED machine light
- Reduction sleeve MK 6 / MK 3
- Fixed centering points MK 3
- Fixed centering point MK 3, alloyed
- Change gear set
- Initial machine filling with quality oil
- operating tool

TH 4010 / TH 4010D

- Quadruple steel holder 16 mm

TH 4010V

- Quick-change steel holder 3-E
- Steel holder 20 x 100 type D for square chisels

Do not forget the lathe chuck!

Media informations ▼



Picture shows TH 4010D with optional lathe chuck



Tailstock

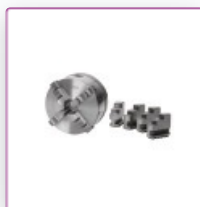
- Tailstock for taper turning adjustable ± 10 mm
- Tailstock quill and handwheel with adjustable fine scaling 0.025 mm
- Quick, easy and tool-free adjustment by means of clamping lever

Technical data ▼

Dimensions and weights			
Length (product) approx.	1920 mm	Width/depth (product) approx.	740 mm
Height (product) approx.	1222 mm	Net weight approx.	735 kg
Work areas			
Max. height	205 mm	Max. width	1000 mm
Swing diameter above machine bed	410 mm	Swing diameter above planing slide	255 mm
Bed width	206 mm		
Speed range			
Number of gears	16	Speed range	45 – 1800 min ⁻¹
Electrical Data			
Drive motor output	1,5 kW	Supply voltage	400 V
Mains frequency	50 Hz		
Spindle			
Spindle chuck	Camlock DIN ISO 702-2 No. 5	Spindle bore/rod passage diameter	52 mm
Spindle cone	MT 6	Tool holder max. chuck height	20 mm
Tailstock			
Tailstock chuck	MK 3	Tailstock quill stroke	130 mm
Tailstock quill diameter	45 mm		
Pitches			
Metric pitch	0,4 – 7 mm/rev	Number of metric pitches	42
Imperial pitch	70 – 4 Gg/1"	Number of imperial pitches	42
Travel			
Travel upper slide	100 mm	Travel cross slide	195 mm

Travel carriage saddle	750 mm	
Feed		
Longitudinal feed range	0,043 – 0,653 mm/rev	Number of longitudinal feeds 48
Flat feed range	0,015 – 0,206 mm/rev	Number of flat feeds 48
Tool clamping		
Tool holder chuck size	16 mm	

Accessories ▼



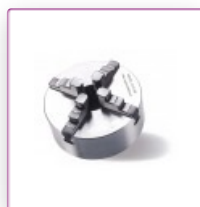
OPTIMUM four-jaw lathe chuck Cast Camlock, centre clamping

Ø 200 mm Camlock DIN ISO 702-2 No. 5

Article number ▼

3442845

OPTIMUM[®]
MASCHINEN - GERMANY



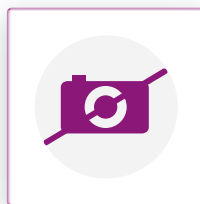
OPTIMUM four-jaw lathe chuck Cast Camlock, single clamping

Ø 200 mm Camlock DIN ISO 702-2 No. 5

Article number ▼

3442880

OPTIMUM[®]
MASCHINEN - GERMANY



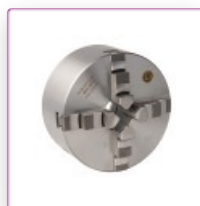
BISON three-jaw lathe chuck Camlock casting centre clamping

Ø 200 mm Camlock DIN ISO 702-2 No. 5

Article number ▼

3450315

OPTIMUM[®]
MASCHINEN - GERMANY



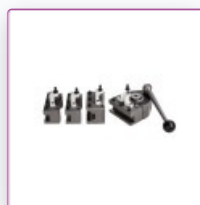
BISON four-jaw lathe chuck Cast Camlock centric exciting

Ø 200 mm Camlock DIN ISO 702-2 No. 5

Article number ▼

3450365

OPTIMUM[®]
MASCHINEN - GERMANY



Quick change tool kit

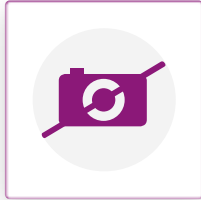
SWH 3 - E

Repeat accuracy 0.01 mm

Article number ▼

3384303

OPTIMUM[®]
MASCHINEN - GERMANY



Factory assembly and adaptation

SWH

Article number ▼

9000400

OPTIMUM[®]
MASCHINEN - GERMANY



Spare steel holder

20 x 100 type D

Article number ▼

3384304

OPTIMUM[®]
MASCHINEN - GERMANY



Spare steel holder

30 x 100 type H

Article number ▼

3384322

OPTIMUM[®]
MASCHINEN - GERMANY



Turning tool set

HM 20 mm, 5-part

Article number ▼

3441670

OPTIMUM[®]
MASCHINEN - GERMANY



Turning tool set

HM 20 mm, 5-part

Article number ▼

3441617

OPTIMUM[®]
MASCHINEN - GERMANY



Turning tool set

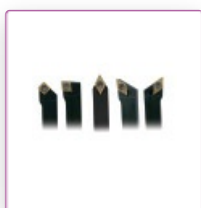
HM 16 mm, 5-part

With carbide inserts

Article number ▼

3441668

OPTIMUM[®]
MASCHINEN - GERMANY



Turning tool set

HM 16 mm, 5-part "Made in Germany"

Article number ▼

3441216

OPTIMUM[®]
MASCHINEN - GERMANY



Turning tool set
HM 16 mm, 5-part

Article number ▼
3441610

OPTIMUM®
MASCHINEN - GERMANY



Turning tool set
16 mm, 11 parts

Article number ▼
3441604

OPTIMUM®
MASCHINEN - GERMANY



Internal turning set
5-piece

Article number ▼
3441650

OPTIMUM®
MASCHINEN - GERMANY



Clamping block set for lathes
16-05

Article number ▼
3440653

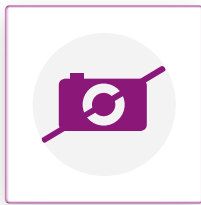
OPTIMUM®
MASCHINEN - GERMANY



Twist drill HSS with Morse taper
MT 3

Article number ▼
3051003

OPTIMUM®
MASCHINEN - GERMANY



Collet chuck
5C - No. 5

Article number ▼
3441555

OPTIMUM®
MASCHINEN - GERMANY



Collet set
SPC 5C

Article number ▼
3441509

OPTIMUM®
MASCHINEN - GERMANY



Revolving centering point

MT 3

Article number ▼

3440703

OPTIMUM[®]
MASCHINEN - GERMANY



Revolving centering point

MT 3

Article number ▼

3440733

OPTIMUM[®]
MASCHINEN - GERMANY



Revolving centering point

MT 3

Article number ▼

3451003

OPTIMUM[®]
MASCHINEN - GERMANY



Leveling plate

SE 1

Article number ▼

3381012

OPTIMUM[®]
MASCHINEN - GERMANY



Vibration damper machine foot

SE 55

Article number ▼

3352981

OPTIMUM[®]
MASCHINEN - GERMANY