

Mechanics lathe

OPTIturn TH 3610D

Fully equipped mechanic lathes. TH 3610D with digital position indicator DPA 21

OPTIMUM[®]
MASCHINEN - GERMANY

Article number ▼

3402060

Brand ▼

Optimum

Catalog directory ▼

Metalworking machines » Lathes conventional » OPTIturn TH 3610 / TH 3610D



Shipping informations ▼

Packaging Metrics		Weights		Delivery		Other	
Length	1,930 mm	Gross	610 kg	Delivery	Carrier	DualUse	✘
Width	760 mm	Net	490 kg	Content	1 pc(s).	SCIP	n/a
Height	1,700 mm					SVHC	No



Description ▼

- Hardened and ground Z-axis guideway
- Spindle mount Camlock DIN ISO 702-2 No. 5
- Precisely crafted sled
- Handwheels with adjustable fine scale 0.04 / 0.02 mm
- Quadruple tool holder
- All guides can be adjusted by wedge strips
- Main spindle running in oil bath
- Gear wheels smooth, hardened and ground
- Guaranteed concentricity of the spindle nose better than 0.015 mm
- Gears and shafts hardened and ground, running in an oil bath in precision bearings
- Handwheels decoupled and tested according to EN 23125
- Safety handwheels with release function in the X and Z axis
- Two-channel right-left switch tested to EN 23125
- Switch with life cycle calculation, tested according to EN ISO 13849
- Motor protection switch, lockable main switch
- Right / left rotation on bed sled switchable
- Leading spindle
- Tailstock for taper turning ± 10 mm adjustable
- Tailstock quill and hand wheel with adjustable fine scale 0.025 mm
- Fast, easy and tool-free adjustment by means of a clamping lever
- Strongly ribbed prism bed, induction hardened and precision ground
- Machine base with tool compartments on both sides
- Emergency stop device with foot control
- Extractable chip tray with guide rails
- LED machine lamp integrated in chip protection

TH 3610D:

- **Digital position indicator DPA 21**

- User-friendly membrane keypad, splash-proof, closed and glare-free
- glass scales

Delivery content ▼

- Fixed bezel passage max. \varnothing 100 mm
- Running bezel passage max. \varnothing 95 mm
- LED machine light
- Reduction sleeve MK 6 / MK 3
- Two fixed centering points MK 3
- Quadruple tool holder
- Change gear set
- substructure
- Initial machine filling with quality oil
- operating tool

Do not forget the lathe chuck!

Media informations ▼



Picture shows TH 3610D with optional lathe chuck



Control cabinet

- All contactors and relays from Siemens or Schneider



Tailstock

- Tailstock for taper turning adjustable ± 10 mm
- Tailstock quill and handwheel with adjustable fine scaling 0.025 mm
- Quick, easy and tool-free adjustment by means of clamping lever



Chip tray

- Pull-out chip tray with guide rails

Machine base

- Machine base with tool compartments on both sides

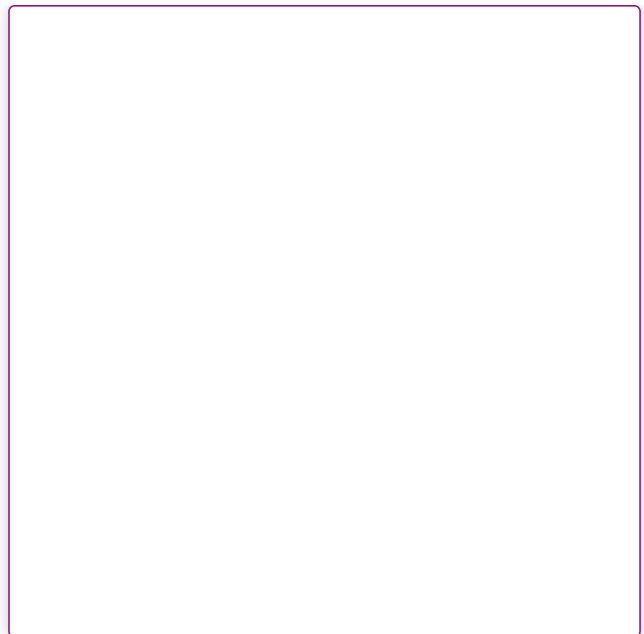


Fig. position indicator DPA 21

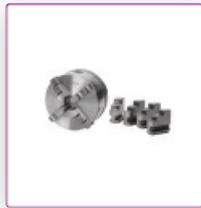
- User-friendly membrane keypad
- Significant reduction in production times
- Higher working accuracy
- Error rate is reduced

Technical data ▼

Dimensions and weights			
Length (product) approx.	1930 mm	Width/depth (product) approx.	725 mm
Height (product) approx.	1620 mm	Net weight approx.	572 kg
Work areas			
Max. height	180 mm	Max. width	980 mm
Swing diameter above machine bed	356 mm	Swing diameter above planing slide	225 mm
Turning length in bed bridge	160 mm	Bed width	187 mm
Speed range			
Number of gears	8	Speed range	70 – 2000 min ⁻¹
Electrical Data			
Drive motor output	1,5 kW	Supply voltage	400 V
Mains frequency	50 Hz		
Spindle			
Spindle chuck	Camlock DIN ISO 702-2 No. 5	Spindle bore/rod passage diameter	52 mm
Spindle cone	MT 6	Tool holder max. chuck height	16 mm
Tailstock			
Tailstock chuck	MK 3	Tailstock quill stroke	120 mm
Tailstock quill diameter	42 mm		
Pitches			
Metric pitch	0,4 – 7 mm/rev	Number of metric pitches	26
Imperial pitch	56 – 4 Gg/1"	Number of imperial pitches	34
Travel			
Travel upper slide	100 mm	Travel cross slide	170 mm
Travel carriage saddle	840 mm		


Feed			
Longitudinal feed range	0,052 – 1,392 mm/rev	Number of longitudinal feeds	32
Flat feed range	0,014 – 0,38 mm/rev	Number of flat feeds	32

Accessories



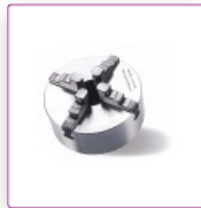
OPTIMUM four-jaw lathe chuck Cast Camlock, centre clamping

Ø 200 mm Camlock DIN ISO 702-2 No. 5

Article number 

3442845

OPTIMUM[®]
MASCHINEN - GERMANY



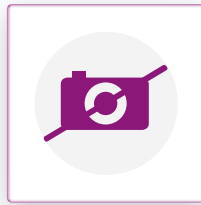
OPTIMUM four-jaw lathe chuck Cast Camlock, single clamping

Ø 200 mm Camlock DIN ISO 702-2 No. 5

Article number 


3442880

OPTIMUM[®]
MASCHINEN - GERMANY



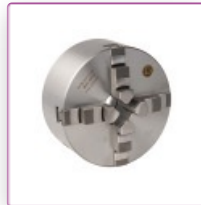
BISON three-jaw lathe chuck Camlock casting centre clamping

Ø 200 mm Camlock DIN ISO 702-2 No. 5

Article number 

3450315

OPTIMUM[®]
MASCHINEN - GERMANY



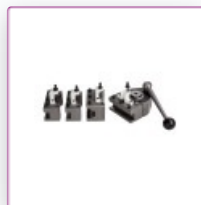
BISON four-jaw lathe chuck Cast Camlock centric exciting

Ø 200 mm Camlock DIN ISO 702-2 No. 5

Article number 

3450365

OPTIMUM[®]
MASCHINEN - GERMANY



Quick change tool kit

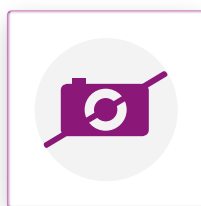
SWH 3 - E

Repeat accuracy 0.01 mm

Article number 

3384303

OPTIMUM[®]
MASCHINEN - GERMANY



Factory assembly and adaptation

SWH

Article number 

9000400

OPTIMUM[®]
MASCHINEN - GERMANY



Spare steel holder
20 x 100 type D

Article number ▼
3384304

OPTIMUM®
MASCHINEN - GERMANY



Spare steel holder
30 x 100 type H

Article number ▼
3384322

OPTIMUM®
MASCHINEN - GERMANY



Turning tool set
16 mm, 11 parts

Article number ▼
3441604

OPTIMUM®
MASCHINEN - GERMANY



Turning tool set
HM 16 mm, 5-part
With carbide inserts

Article number ▼
3441668

OPTIMUM®
MASCHINEN - GERMANY



Turning tool set
HM 16 mm, 5-part

Article number ▼
3441610

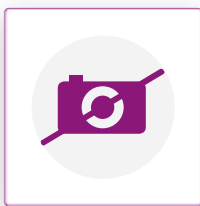
OPTIMUM®
MASCHINEN - GERMANY



Collet chuck
5C - No. 5

Article number ▼
3441555

OPTIMUM®
MASCHINEN - GERMANY



Position stop with fine adjustment
for lathe TH3610

Article number ▼
3441523

OPTIMUM®
MASCHINEN - GERMANY



Turning tool set
HM 16 mm, 5-part "Made in Germany"

Article number ▼
3441216

OPTIMUM®
MASCHINEN - GERMANY



Internal turning set
12 mm

Article number ▼
3441641

OPTIMUM®
MASCHINEN - GERMANY



Internal turning set
5-piece

Article number ▼
3441650

OPTIMUM®
MASCHINEN - GERMANY



Center drill set
10tlg. 0.75-4.5 mm HSS

Article number ▼
3203010

OPTIMUM®
MASCHINEN - GERMANY



Clamping block set for lathes
16-05

Article number ▼
3440653

OPTIMUM®
MASCHINEN - GERMANY



Twist drill HSS with Morse taper
MT 3

Article number ▼
3051003

OPTIMUM®
MASCHINEN - GERMANY



Face plate
Ø 330 mm Camlock DIN ISO 702-2 No. 5

Article number ▼
3442978

OPTIMUM®
MASCHINEN - GERMANY



Collet set
SPC 5C

Article number ▼
3441509

OPTIMUM[®]
MASCHINEN - GERMANY



Revolving centering point
MT 3

Article number ▼
3440703

OPTIMUM[®]
MASCHINEN - GERMANY



Revolving centering point
MT 3

Article number ▼
3440733

OPTIMUM[®]
MASCHINEN - GERMANY



Revolving centering point
MT 3

Article number ▼
3451003

OPTIMUM[®]
MASCHINEN - GERMANY



Universal coolant device
230 V

Article number ▼
3351999

OPTIMUM[®]
MASCHINEN - GERMANY



Vibration damper machine foot
SE 55

Article number ▼
3352981

OPTIMUM[®]
MASCHINEN - GERMANY



Leveling plate
SE 1

Article number ▼
3381012

OPTIMUM[®]
MASCHINEN - GERMANY