

Center lathe

OPTIturn TH 3309

Fully equipped guide and traction spindle lathes. TH 3309D with digital position indicator DPA 21, TH 3309V with continuous speed control and digital position indicator DPA 21

Article number ▼

3402030

Brand ▼

Optimum

Catalog directory ▼

Metalworking machines » Lathes conventional » OPTIturn TH 3309 / TH 3309D / TH 3309V

OPTIMUM[®]
MASCHINEN - GERMANY



Shipping informations ▼

Packaging Metrics		Weights		Delivery		Other	
Length	1,710 mm	Gross	560 kg	Delivery	Carrier	DualUse	✘
Width	760 mm	Net	450 kg	Content	1 pc(s).	SCIP	n/a
Height	1,520 mm					SVHC	No



Description ▼

- Hardened and ground Z-axis guideway
- Spindle mount Camlock DIN ISO 702-2 No. 4
- Precisely crafted sled
- Handwheels with adjustable fine scale 0.04 / 0.02 mm
- Quadruple tool holder
- All guides can be adjusted by wedge strips
- Main spindle running in oil bath
- Gear wheels smooth, hardened and ground
- Adjustment range upper slide $\pm 90^\circ$
- Guaranteed concentricity of the spindle nose better than 0.015 mm
- Handwheels decoupled and tested according to EN 23125
- Safety handwheels with release function in the X and Z axis
- Two-channel right-left switch tested to EN 23125
- DC 24 volt electrical system with two-channel safety circuit according to EN 23125
- Lathe chuck protection tested according to EN 23125
- Switch with life cycle calculation, tested according to EN ISO 13849
- Lockable main switch
- Right / left rotation on bed sled switchable
- Leading spindle
- Tailstock for taper turning ± 10 mm adjustable
- Tailstock quill and handwheel with adjustable fine scale 0.02 mm
- Fast, easy and tool-free adjustment by means of a clamping lever
- Strongly ribbed prism bed, induction hardened and precision ground
- Machine base with tool compartment on the right side (left side with 3 panels (no compartments))
- Extractable chip tray with guide rails
- Emergency stop device with foot control
- LED machine lamp integrated in chip protection

Delivery content ▼

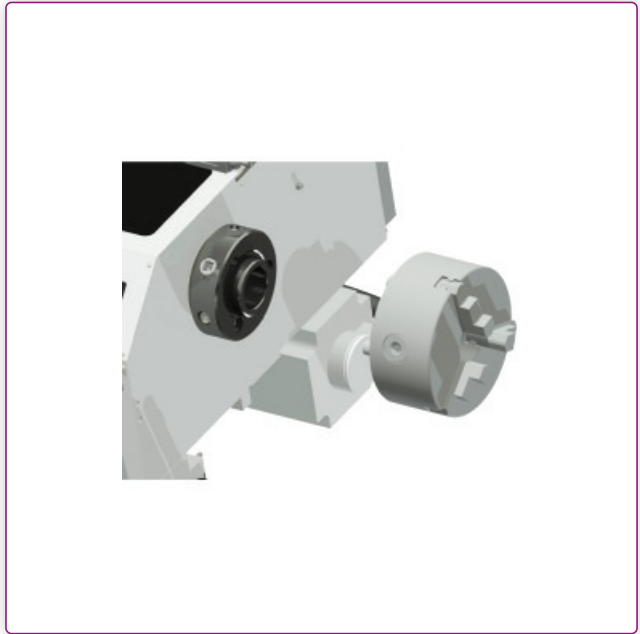
- Steady rest passageway $\varnothing 6 - 50$ mm
- Follow rest passageway $\varnothing 8 - 30$ mm
- LED machine lamp
- Reduction sleeve MT 5 - MT 3
- Two fixed centres MT 3
- Quadruplicate tool holder 16 mm
- Replaceable gear set
- Machine chassis
- Machine initially filled with premium grade oil
- Operating tool

Do not forget the lathe chuck

Media informations ▼



Picture shows TH 3309D with optional lathe chuck



Spindle mount

- The turning spindle is designed as a Camlock DIN ISO 702-2 No. 4 receptacle



Chip tray

- Pull-out chip tray with guide rails

Technical data ▾

Dimensions and weights			
Length (product) approx.	1685 mm	Width/depth (product) approx.	745 mm
Height (product) approx.	1320 mm	Net weight approx.	510 kg
Work areas			
Max. height	165 mm	Max. width	830 mm
Swing diameter above machine bed	330 mm	Swing diameter above planing slide	208 mm
Speed range			

Number of gears	16	Speed range	70 – 2000 min ⁻¹
Electrical Data			
Drive motor output	1,5 kW	Supply voltage	400 V
Mains frequency	50 Hz		
Spindle			
Spindle chuck	Camlock DIN ISO 702-2 No. 4	Spindle bore/rod passage diameter	38 mm
Spindle cone	MK 5	Tool holder max. chuck height	16 mm
Tailstock			
Tailstock chuck	MK 3	Tailstock quill stroke	110 mm
Tailstock quill diameter	32 mm		
Pitches			
Metric pitch	0,4 – 7 mm/rev	Number of metric pitches	26
Imperial pitch	56 – 4 Gg/1"	Number of imperial pitches	34
Travel			
Travel upper slide	98 mm	Travel cross slide	164 mm
Travel carriage saddle	695 mm		
Feed			
Longitudinal feed range	0,052 – 1,392 mm/rev	Number of longitudinal feeds	32
Flat feed range	0,014 – 0,38 mm/rev	Number of flat feeds	32

Accessories ▼



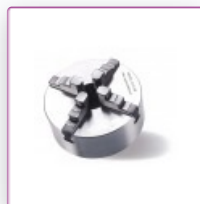
OPTIMUM Three-jaw lathe chuck centre clamping
 Ø 200 mm Camlock DIN ISO 702-2 No. 4
Article number ▼
 3442762

OPTIMUM®
 MASCHINEN - GERMANY



OPTIMUM four-jaw lathe chuck Cast Camlock, centre clamping
 Ø 200 mm Camlock DIN ISO 702-2 No. 4
Article number ▼
 3442843

OPTIMUM®
 MASCHINEN - GERMANY



OPTIMUM four-jaw lathe chuck Cast Camlock, single clamping
 Ø 200 mm Camlock DIN ISO 702-2 No. 4
Article number ▼
 3442879

OPTIMUM®
 MASCHINEN - GERMANY

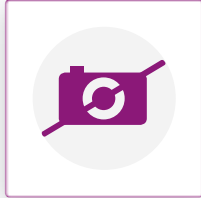


**BISON three-jaw lathe chuck Camlock casting
centre clamping**

Ø 160 mm Camlock DIN ISO 702-2 No. 4

Article number ▼
3450305

OPTIMUM[®]
MASCHINEN - GERMANY



**BISON three-jaw lathe chuck Camlock casting
centre clamping**

Ø 200 mm Camlock DIN ISO 702-2 No. 4

Article number ▼
3450310

OPTIMUM[®]
MASCHINEN - GERMANY



**BISON four-jaw lathe chuck Cast Camlock
centric exciting**

Ø 160 mm Camlock DIN ISO 702-2 No. 4

Article number ▼
3450355

OPTIMUM[®]
MASCHINEN - GERMANY

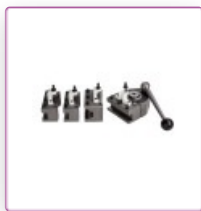


**BISON four-jaw lathe chuck Cast Camlock
centric exciting**

Ø 200 mm Camlock DIN ISO 702-2 No. 4

Article number ▼
3450360

OPTIMUM[®]
MASCHINEN - GERMANY

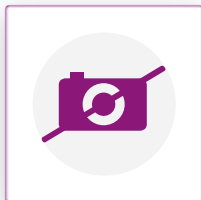


**Quick change tool kit
SWH 3 - E**

Repeat accuracy 0.01 mm

Article number ▼
3384303

OPTIMUM[®]
MASCHINEN - GERMANY



**Factory assembly and adaptation
SWH**

Article number ▼
9000400

OPTIMUM[®]
MASCHINEN - GERMANY



Internal turning set

12 mm

Article number ▼

3441641

OPTIMUM[®]
MASCHINEN - GERMANY



Internal turning set

5-piece

Article number ▼

3441650

OPTIMUM[®]
MASCHINEN - GERMANY



Center drill set

10tlg. 0.75-4.5 mm HSS

Article number ▼

3203010

OPTIMUM[®]
MASCHINEN - GERMANY



Clamping block set for lathes

16-05

Article number ▼

3440653

OPTIMUM[®]
MASCHINEN - GERMANY



Twist drill HSS with Morse taper

MT 3

Article number ▼

3051003

OPTIMUM[®]
MASCHINEN - GERMANY



Face plate

Ø 300 mm Camlock DIN ISO 702-2 No. 4

Article number ▼

3442976

OPTIMUM[®]
MASCHINEN - GERMANY



Collet chuck

16C

Manually operated chuck for distortion-free clamping of workpieces

Article number ▼

3450245

OPTIMUM®
MASCHINEN - GERMANY



Collet chuck

5C - No. 4

Article number ▼

3441554

OPTIMUM®
MASCHINEN - GERMANY



Collet set

SPC 5C

Article number ▼

3441509

OPTIMUM®
MASCHINEN - GERMANY



Revolving centering point

MT 3

Article number ▼

3440703

OPTIMUM®
MASCHINEN - GERMANY



Revolving centering point

MT 3

Article number ▼

3440733

OPTIMUM®
MASCHINEN - GERMANY



Revolving centering point

MT 3

Article number ▼

3451003

OPTIMUM®
MASCHINEN - GERMANY



**Position stop with fine adjustment
for lathe TH3309**

Article number ▼
3441522

OPTIMUM[®]
MASCHINEN - GERMANY



**Universal coolant device
230 V**

Article number ▼
3351999

OPTIMUM[®]
MASCHINEN - GERMANY



**Leveling plate
SE 1**

Article number ▼
3381012

OPTIMUM[®]
MASCHINEN - GERMANY



**Vibration damper machine foot
SE 55**

Article number ▼
3352981

OPTIMUM[®]
MASCHINEN - GERMANY