

Bench drill

OPTIdrill DH 18V

Robust and with powerful Optimum brushless drive. Highlight of the machine - the menu-driven operation of the working modes drilling / tapping

OPTIMUM[®]
MASCHINEN - GERMANY

Article number ▼

3020220

Brand ▼

Optimum

Catalog directory ▼

Metalworking machines » Drilling machines
» Drilling machines with Vario drive »
OPTIdrill DH V



Shipping informations ▼

Packaging Metrics		Weights		Delivery		Other	
Length	1,000 mm	Gross	84 kg	Delivery	Carrier	DualUse	✘
Width	380 mm	Net	64 kg	Content	1 pc(s).	SCIP	n/a
Height	620 mm					SVHC	No



Description ▼

- Restless and powerful brushless drive
- Best power transmission through aluminum pulleys in conjunction with toothed GATES quality V-belt
- Smooth running thanks to ground multi-tooth driver
- Concentricity guaranteed less than 0.015 mm measured in Bohrpipeline
- Drill spindle with precision ball bearing
- Membrane keyboard; Dirt and water resistant, easy to clean
- High quality OPTIMUM keyless chuck as standard
- Separate emergency stop impact switch
- Precisely machined drill table with diagonal T-slots, 360 ° rotatable
- Circulating cooling water channel around the drilling table
- Large, height-adjustable protective screen with safety switch for the utmost protection of the user
- depth stop
- V-belt cover with safety switch
- V-belt tensioning device
- Massive base plate, large dimensions, strongly ribbed on the back

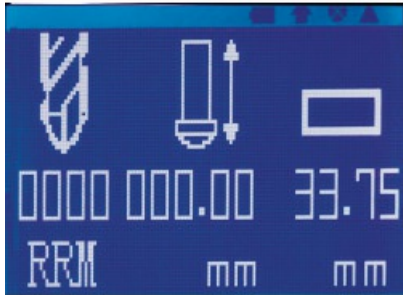
Delivery content ▼

- Keyless chuck 1 - 13 mm
- Morse cone MK 2
- T-nuts

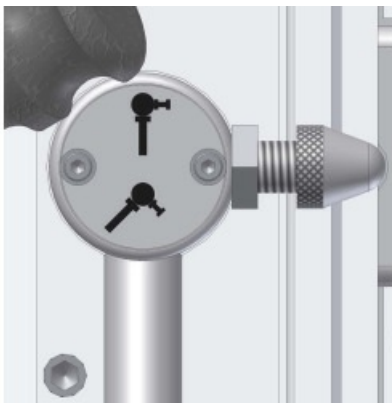
Media informations ▼



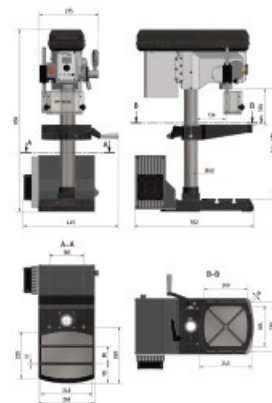
- Particularly quiet running
- High performance
- Almost constant torque over the entire speed range



- OLED display
- Spindle speed
- Depth display (target/actual)
- Drilling
- Tapping
- Workpiece thickness selection



Easy tensioning of the V-belts

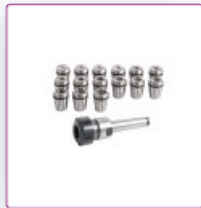


Technical data

Dimensions and weights			
Column diameter	60 mm	Length (product) approx.	552 mm
Width/depth (product) approx.	445 mm	Height (product) approx.	850 mm
Net weight approx.	64 kg		
Drilling performance			
Drilling performance steel (S235JR)	18 mm	Continuous drilling performance steel (S235JR)	16 mm
Thread tapping steel (S235JR)	M10		

Drilling table			
Drilling table workspace length	230 mm	Drilling table workspace width	245 mm
Drilling table T-groove type	diagonal	Drilling table T-groove size	12 mm
Max. distance spindle - drilling table	370 mm		
Speed range			
Speed range	100 – 6000 min ⁻¹	Number of gears	5
Speed control	electronic		
Electrical Data			
Total rated value	1,5 kW	Supply voltage	230 V
Mains frequency	50 Hz		
Machine base			
Max. distance spindle - machine base	485 mm	Machine base workspace length	220 mm
Machine base workspace width	240 mm	Machine base T-groove size	12 mm
Machine base T-groove number	2	Machine base T-groove spacing	80 mm
Spindle			
Quill stroke	65 mm	Spindle chuck	MK2
Reach	130 mm		

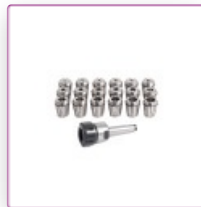
Accessories ▼



Collet chuck set MK 2 / ER 25 - M10

Article number ▼
3352052

OPTIMUM[®]
MASCHINEN - GERMANY



Collet chuck set MK 2 / ER 32 - M10

Article number ▼
3352053

OPTIMUM[®]
MASCHINEN - GERMANY

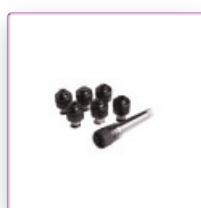


Tapping attachment M5 - M12 / B16

Built-in fast reverse, immediately effective when changing the feed direction

Article number ▼
3352042

OPTIMUM[®]
MASCHINEN - GERMANY



Tapping chuck with inserts MK 2; M3 - M12

Article number ▼
3050702

OPTIMUM[®]
MASCHINEN - GERMANY



Tapping chuck small
THERMDRILL M3-M12

Article number ▼
3050715

OPTIMUM®
MASCHINEN - GERMANY



Tapping chuck big
THERMDRILL M8-M20

Article number ▼
3050716

OPTIMUM®
MASCHINEN - GERMANY



Precision quick-action drill chuck
1-10 mm, B16

Article number ▼
3050610

OPTIMUM®
MASCHINEN - GERMANY



Keyless drill chuck
DKC13 1-13 mm

Article number ▼
3050632

OPTIMUM®
MASCHINEN - GERMANY



Keyless drill chuck
DKC16 1-16 mm

Article number ▼
3050633

OPTIMUM®
MASCHINEN - GERMANY



OPTIMUM direct quick-action drill chuck
MK 2 1 - 16 mm; up to 6000 min⁻¹

Article number ▼
3050571

OPTIMUM[®]
MASCHINEN - GERMANY



OPTIMUM direct quick-action drill chuck
MK 2 1 - 13 mm; up to 8000 min⁻¹

Article number ▼
3050572

OPTIMUM[®]
MASCHINEN - GERMANY



Clamping tool kit
SPW 10

Article number ▼
3352016

OPTIMUM[®]
MASCHINEN - GERMANY



T-nut
M 10/12 mm

Article number ▼
3353022

OPTIMUM[®]
MASCHINEN - GERMANY



Twist drill HSS with Morse taper
MT 2

Article number ▼
3051002

OPTIMUM[®]
MASCHINEN - GERMANY



Twist Drill Set
25 pieces, 1 - 13 mm

Article number ▼
3201010

OPTIMUM[®]
MASCHINEN - GERMANY



Twist Drill Set
41-piece, 6 - 10 mm (0.1 mm rising)

Article number ▼
3201021

OPTIMUM®
MASCHINEN - GERMANY



Countersink set
6 pieces: 6/8/10 / 11.5 / 15/19 mm

Article number ▼
3201050

OPTIMUM®
MASCHINEN - GERMANY



Countersink set
HSS, 6 pieces

Article number ▼
3201051

OPTIMUM®
MASCHINEN - GERMANY



Sheet metal cone drill set
HSS, 3-part, 3 - 30.5 mm

Article number ▼
3201055

OPTIMUM®
MASCHINEN - GERMANY



Thread repair assortment

M5 - M12

Article number ▼

3202010

OPTIMUM®
MASCHINEN - GERMANY



Morse taper

MK2-B16

Article number ▼

3050659

OPTIMUM®
MASCHINEN - GERMANY



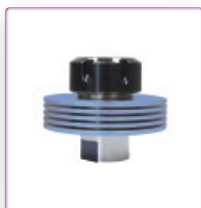
Extension sleeve

MK 2-MK 3

Article number ▼

3050667

OPTIMUM®
MASCHINEN - GERMANY



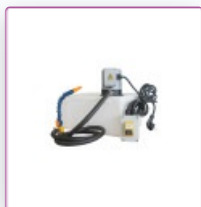
Collet chuck

THERMDRILL B16 - ER32

Article number ▼

3060007

OPTIMUM®
MASCHINEN - GERMANY



Universal coolant device

230 V

Article number ▼

3351999

OPTIMUM®
MASCHINEN - GERMANY



Universal base

MSM 1 340 x 420 x 800 mm

Article number ▼

3353000

OPTIMUM®
MASCHINEN - GERMANY



Chip tray
720 x 470 x 30 mm

Article number ▼
3352999

OPTIMUM®
MASCHINEN - GERMANY



Universal machine and tool trolley
MSU 3

Article number ▼
3352990

OPTIMUM®
MASCHINEN - GERMANY



Universal machine and tool trolley
MSU 4

Article number ▼
3352991

OPTIMUM®
MASCHINEN - GERMANY



Machine vice
BMP 100

Article number ▼
3052610

OPTIMUM®
MASCHINEN - GERMANY



Machine vice
BMP 130

Article number ▼
3052613

OPTIMUM®
MASCHINEN - GERMANY



Machine vice
BSI 100

Article number ▼
3000210

OPTIMUM®
MASCHINEN - GERMANY



Machine vice
BSI-Q 100

Article number ▼
3000230

OPTIMUM®
MASCHINEN - GERMANY



Cone ejector
MSP1

Article number ▼
3050636

OPTIMUM®
MASCHINEN - GERMANY



Cooling lubricant nebulizer
MMC1

Article number ▼
3356663

OPTIMUM®
MASCHINEN - GERMANY



Coolant hoses with magnetic base
KMS 2

Article number ▼
3356660

OPTIMUM®
MASCHINEN - GERMANY



Basic equipment
THERMDRILL Basic Kit

Article number ▼
3060004

OPTIMUM®
MASCHINEN - GERMANY



Workplace mat
1840 x 640 mm
For the dry and wet area
Article number ▼
6800000

unicraft®
Werkstatttechnik



Workplace mat
1840 x 940 mm
For the dry and wet area
Article number ▼
6800005

unicraft®
Werkstatttechnik



Workplace mat
3040 x 940 mm
For the dry and wet area
Article number ▼
6800006

unicraft®
Werkstatttechnik



Workplace mat

3040 x 640 mm

For the dry and wet area

Article number ▼

6800001

