



Coupling Nut

HRC 34°



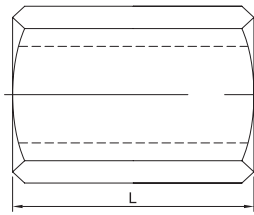
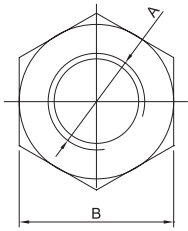
VERTEX®

mm



Metric Size

ORDER NO.	A Thread	B Parallel	L Length	Weight (kg)	CODE NO.
2612M	M8x1.25	13	22	0.033	1003-060
2613M	M10x1.5	17	25	0.035	1003-061
2614M	M12x1.75	21	32	0.065	1003-062
2614M-1	M14x2.0	21	32	0.06	1003-063
2615M	M16x2.0	26	41	0.128	1003-064
2616M	M18x2.5	32	48	0.228	1003-065
2617M	M20x2.5	32	48	0.208	1003-066
2618M	M24x3.0	41	64		1003-067



Inch Size

ORDER NO.	A Thread	B Parallel	L Length	Weight	CODE NO.
2612I	5/16-18	9/16	7/8	0.033	1003-060I
2613I	3/8-16	11/16	1	0.035	1003-061I
2614I	1/2-12 1/2-13	7/8	1-1/4		1003-062I
2615I	5/8-11	1-1/16	1-5/8	0.128	1003-064I
2616I	3/4-10	1-1/4	1-7/8	0.22	1003-065I
2617I	7/8-9	1-7/6	1-7/8		1003-066I
2618I	1-8	1-5/8	2-1/2		1003-067I



Flange Nut

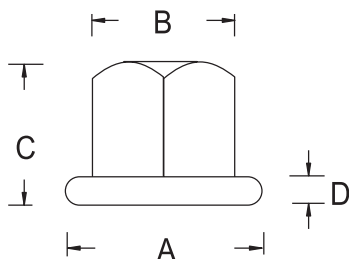
HRC 34°



Metric Size

mm

ORDER NO.	Thread	A	B (M/M)	C	D	Weight (kg)	CODE NO.
4512	M8x1.25	19	13	8	2	0.013	1003-050
4513	M10x1.5	22	17	12	3	0.023	1003-051
4514	M12x1.75	28	19	16	4	0.043	1003-052
4514M	M14x2.0	28	21	16	4	0.047	1003-053
4515	M16x2.0	35	26	17	5	0.087	1003-054
4516	M18x2.5	41	32	25	6	0.10	1003-055
4517	M20x2.5	44	32	35	6	0.092	1003-056
4518	M24x3.0	50	41	32	6	0.12	1003-057



Inch Size

ORDER NO.	Thread	A	B (M/M)	C	D	Weight (kg)	CODE NO.
4512I	5/16-18	3/4	9/16	3/8	3/32	0.013	1003-050I
4513I	3/8-16	7/8	11/16	1/2	1/8	0.023	1003-051I
4514I	1/2-12NC 1/2-13NC	1-1/8	7/8	5/8	5/32	0.043	1003-052I
4515I	5/8-11	1-3/8	1-1/16	11/16	3/16	0.087	1003-054I
4516I	3/4-10	1-5/8	1-1/4	1	1/4	0.092	1003-055I
4517I	7/8-9	1-3/4	1-7/16	1-1/8	1/4	0.12	1003-056I
4518I	1-8	2	1-5/8	1-1/4	1/4	0.12	1003-057I