



# C-20,25,32,42 Collet

## C-TYPE COLLET



# VERTEX®

### 20, 25, 32, 42 STRAIGHT COLLET

METRIC



ORDER NO.	COLLET	COLLETS SIZE d INSIDE DIAMETER	D1 O.D.	D2	L	PCS/SET	CODE NO.
C-20-6P	C-20	4, 6, 8, 10, 12, 16	20	25	52	6	3202-180
C-25-7P	C-25	4, 6, 8, 10, 12, 16, 20	25	31	60	7	3202-181
C-32-7P	C-32	6, 8, 10, 12, 16, 20, 25	32	37	73	7	3202-182
C-42-8P	C-42	6, 8, 10, 12, 16, 20, 25, 32	42	48	80	8	3202-183

### 20, 25, 32, 42 STRAIGHT COLLET

INCH



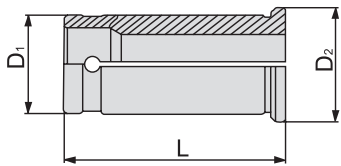
ORDER NO.	COLLET	COLLETS SIZE d INSIDE DIAMETER	D1 O.D.	D2	L	PCS/SET	CODE NO.
C-20-6I	C-20	1/4", 5/16", 3/8", 1/2", 5/8", 3/16"	20	25	52	6	3202-184
C-25-7I	C-25	1/4", 5/16", 3/8", 1/2", 5/8", 3/16", 3/4"	25	31	60	7	3202-185
C-32-7I	C-32	1/4", 5/16", 3/8", 1/2", 5/8", 3/4", 1"	32	37	73	7	3202-186
C-42-8I	C-42	1/4", 5/16", 3/8", 1/2", 5/8", 3/4", 1", 1 1/4"	42	48	80	8	3202-187

METRIC

ORDER NO.	d	CODE NO.
C-20-4	4	3202-200
C-20-6	6	3202-201
C-20-8	8	3202-202
C-20-10	10	3202-203
C-20-12	12	3202-204
C-20-16	16	3202-205
C-25-4	4	3202-229
C-25-6	6	3202-230
C-25-8	8	3202-231
C-25-10	10	3202-232
C-25-12	12	3202-233
C-25-16	16	3202-234
C-25-20	20	3202-235
C-32-6	6	3202-250
C-32-8	8	3202-251
C-32-10	10	3202-252
C-32-12	12	3202-253
C-32-16	16	3202-254
C-32-20	20	3202-255
C-32-25	25	3202-256
C-42-6	6	3202-280
C-42-8	8	3202-281
C-42-10	10	3202-282
C-42-12	12	3202-283
C-42-16	16	3202-284
C-42-20	20	3202-285
C-42-25	25	3202-286
C-42-32	32	3202-287

INCH

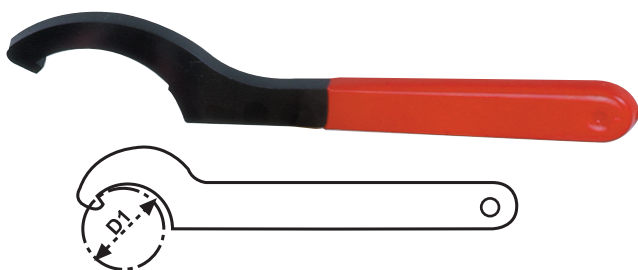
ORDER NO.	d	CODE NO.
C-20-3/16"	3/16"	3202-210
C-20-1/4"	1/4"	3202-211
C-20-5/16"	5/16"	3202-212
C-20-3/8"	3/8"	3202-213
C-20-1/2"	1/2"	3202-214
C-20-5/8"	5/8"	3202-215
C-25-3/16"	3/16"	3202-240
C-25-1/4"	1/4"	3202-241
C-25-5/16"	5/16"	3202-242
C-25-3/8"	3/8"	3202-243
C-25-1/2"	1/2"	3202-244
C-25-5/8"	5/8"	3202-245
C-25-3/4"	3/4"	3202-246
C-32-3/16"	3/16"	3202-260
C-32-1/4"	1/4"	3202-261
C-32-5/16"	5/16"	3202-262
C-32-3/8"	3/8"	3202-263
C-32-1/2"	1/2"	3202-264
C-32-5/8"	5/8"	3202-265
C-32-3/4"	3/4"	3202-266
C-32-7/8"	7/8"	3202-267
C-32-1"	1"	3202-268
C-42-1/4"	1/4"	3202-290
C-42-5/16"	5/16"	3202-291
C-42-3/8"	3/8"	3202-292
C-42-1/2"	1/2"	3202-293
C-42-5/8"	5/8"	3202-294
C-42-3/4"	3/4"	3202-295
C-42-7/8"	7/8"	3202-296
C-42-1"	1"	3202-297
C-42-1 1/4"	1 1/4"	3202-298



ORDER NO.	WEIGHT
C-20	0.1
C-25	0.18
C-32	0.22
C-42	0.35



# C-20,25,32,42 Wrenchs



ORDER NO.	L	D	WEIGHT KGS	COLLETS	CODE NO.
C-20W	227	52	0.22	C-20	3202-311
C-25W	227	58	0.22	C-25	3202-312
C-32W	260	75	0.33	C-32	3202-313
C-42W	270	87	0.35	C42	3202-314