

GP-1

Drill Bit Grinder



Twist drill bits



Deep-slot drill bits



Precision, Satisfying the user's need

Peerless, Super Function, Durable

Quality Assurance, Easy Operation, Stable Quality

High Efficiency, High Quality Grinding Slip, Good Grinding Results

Considerable Design, Invisible Tool Box, Delicate & Friendly Use

Mobility, Portable Design

Model	GP-1
Drill Diameter	Φ2mm~Φ13mm
Point Angle	90°~140°
Power Supply	AC110V 50/60Hz AC220V (Opt.)
R.P.M of Motor	5300 R.P.M.
Grinding Wheel	CBN#200
Weight	N.W 7Kg G.W 8Kg
Machine Size	L:280mm W:133mm H:155mm
Packing Size	L:330mm W:205mm H:225mm
Type of Thinning	X Thinning
Standard Accessories	Collet X 12 pcs
	Collet Holder X 1 set
	Metal Shim 0.1mmX2 pcs / 0.3mmX1 pcs
	Hexagon Wrench 3mmX1 pcs / 4mmX1 pcs
Optional SD Grinding Wheel for Carbide Drills	

GP-1 Optional Accesories	
GP-1 / Imperial Collet Set	Φ2.5mm~Φ12.5mm (11 pcs)
GP-1 / P-SD	SD Grinding Wheel for Carbide Drills
Portable LED light	



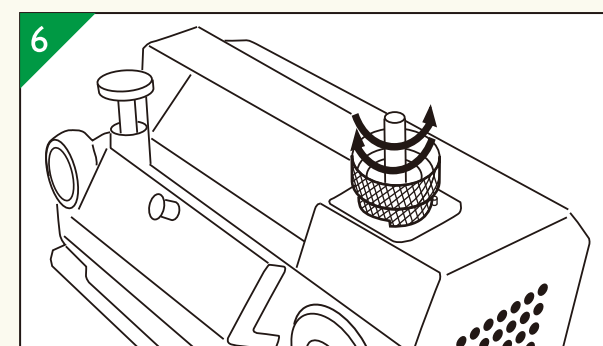
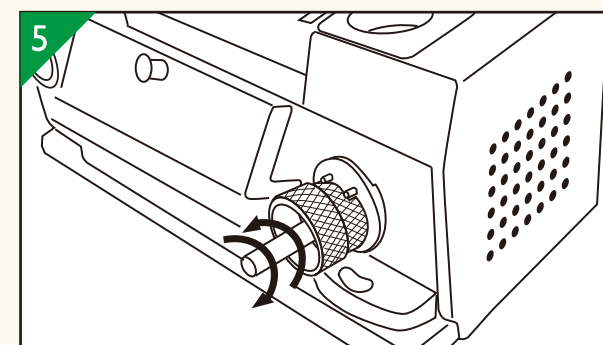
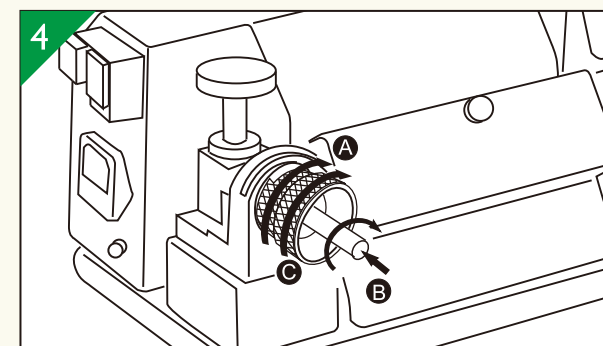
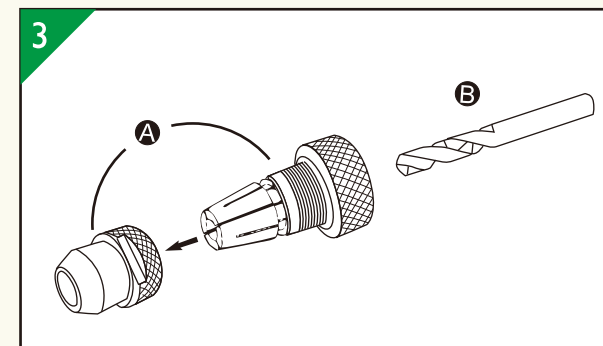
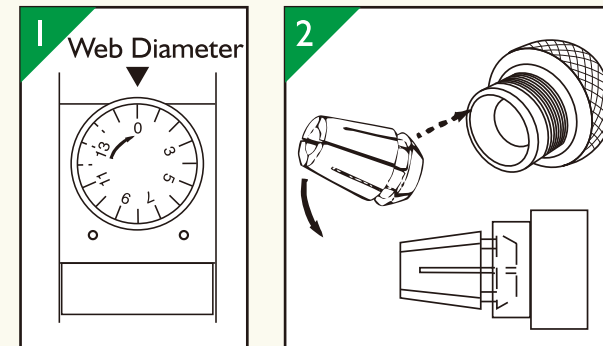
Invisible Tool Box



High Quality Grinding Slip

GP-1

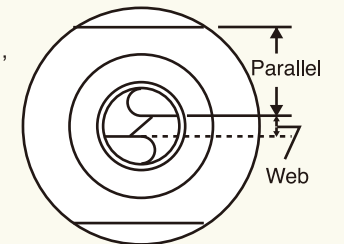
Drill Bit Grinder



OPERATION

- Determine the drill material, then choose the proper grinding wheel, CBN grinding wheel is the standard accessory. (CBN for HSS material drills) (SD for carbide material drills)
- Preset the scale of Web Adjustment Shelf; turn it by clockwise to the end and then turn counterclockwise at zero.
- A. Choose the proper size of collet. Put collet into collet chuck. *Insert collet into collet chuck by 45° angle.
B. The order of setting operation: Put the collet into collet chuck and screw in a little bit by clamping nut, then insert the drill through the collet chuck and push in until the drill is out of the nut about 5mm. *Do not fully fasten the clamping nut with collet chuck, keep the drill able to be adjusted.
- A. Adjust the scale of Web Adjustment Shelf according to the drill diameter.
B. Insert the chuck set into the Web Adjustment Shelf. Then connect it tightly. Turn it right to the end.
C. Plug the drill to the end and turn it right to the end.
D. Turn the chuck set right to the end and tightens it.
E. Turn the chuck set a little to the left and taking it out gently. *Make sure that the cutting lip of drill is parallel with the slot of clamping nut before grinding job started. If it is not parallel, adjust it again.

Attention! If the cutting lip is downward, must increase the scale of Web Adjustment Shelf. If it is upward, please decrease the scale of the Web Adjustment Shelf.
*When the flute length of a drill becomes shorter, the web thickness of a drill would become thicker. So, for the same diameter of drills, the shorter length of a drill, the higher scale of Web Adjustment Shelf need to be increased.



- Turn the power switch on and wait until the motor rotation is stable (about 10 seconds), put the chuck set into the grinding shelf. The slot of clamping nut must fit with the two pins of the grinding shelf. Insert the drill gently into grinding shelf until reach the grinding slip. Grind the drill by moving left and right until the noise stops. And then turn to the other side. Grind the drill with the same way. *The grinding size of drill is 2mm~13mm. *The point angle of drill is from 90° to 140° *While grinding, don't hold the stem of the drill, it will affect the accuracy.
- For grinding the center of drill and the web of drill, insert the chuck set into Web Thinning Shelf and move left and right until the noise stops. After that turn the chuck set to the other side and grinds it by the same way until noise stops.
*The insertion and ejection of the clamping nut set from Web Thinning Shelf, must make sure that the center part of the slot in clamping nut is fitted with the pin of Web Thinning Shelf.
- Please clean the scraps on each grinding shelf after finishing the grinding job.

Remark: 1. For grinding the (long drill) deep hole drill, increase the scale of Web Adjustment Shelf.
2. The high spiral drill bit: Based on the size and specification, increase the adjustments on the scale (Diameterx2).

GP-21

Drill Bit Grinder



Twist drill bits



Deep-slot drill bits



Twist drill bits



NC spotting

High Quality Grinding Slip



Model	GP-21
Drill Diameter	Φ12mm~Φ25.4mm
Point Angle	90°~140°
Power Supply	AC110V 50/60Hz AC220V (Opt.)
R.P.M of Motor	3280 R.P.M.
Grinding Wheel	CBN#200
Weight	N.W 19.8Kg G.W 22Kg
Machine Size	L:365mm W:204mm H:223mm
Packing Size	L:430mm W:270mm H:270mm
Type of Thinning	X Thinning
Standard Accessories	Collet X 15 pcs
	Collet Holder X 1 set
	Metal Shim 0.1mmX2 pcs / 0.3mmX1 pcs
	Hexagon Wrench 3mmX1 pcs / 5mmX1 pcs
Optional SD Grinding Wheel for Carbide Drills	

GP-21 Optional Accessories	
GP-21 / P-D Optional Collet Set	Φ8.0mm~Φ11.0 mm (4 pcs)
GP-21 / P-E Optional Collet Set + Adaptor	Φ3.0mm~Φ7.0mm (5 pcs)
GP-21 / P-E Imperial Collet Set + Adaptor	Φ3.5mm~Φ6.5mm (4 pcs)
GP-21 / P-F Imperial Collet Set	Φ2.5mm~Φ21.5mm (20 pcs)
GP-21 / Optional Collet Set	Φ26mm (1 pcs)
GP-21 / P-SD	SD Grinding Wheel for Carbide Drills
Portable LED light	

Precision, Satisfying the user's need

Peerless, Super Function, Durable

Quality Assurance, Easy Operation, Stable Quality

High Efficiency, High Quality Grinding Slip, Good Grinding Results

Considerable Design, Invisible Tool Box, Delicate & Friendly Use

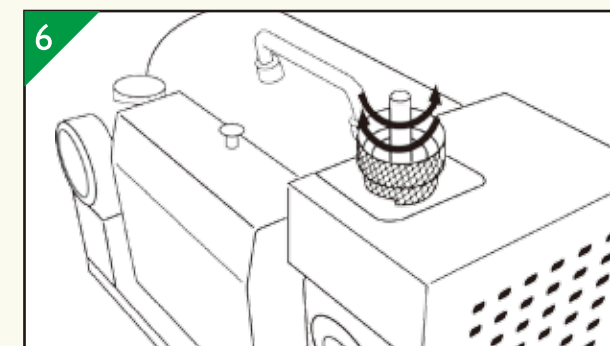
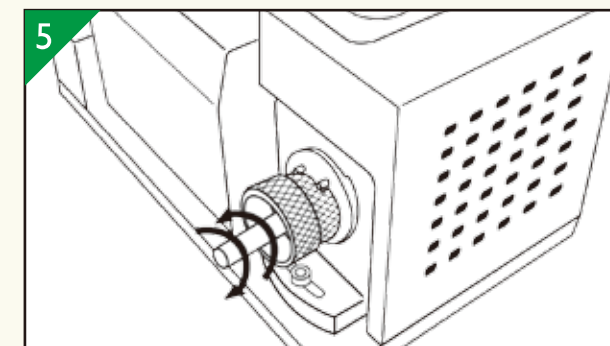
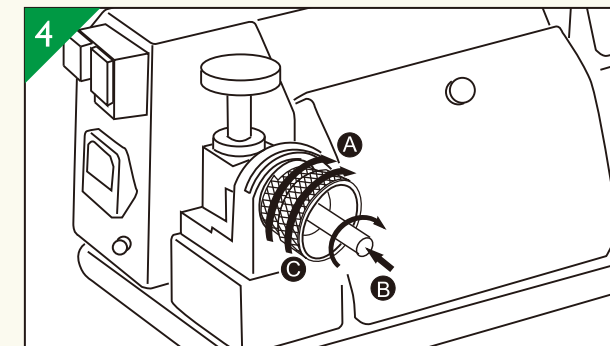
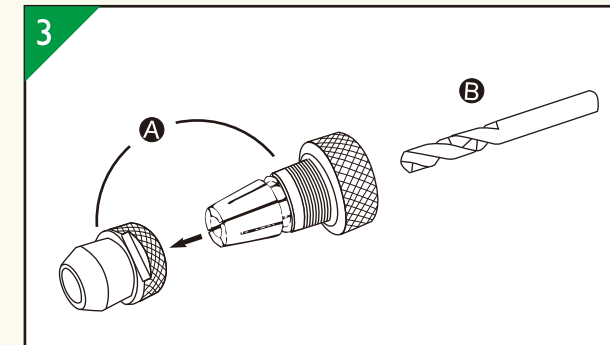
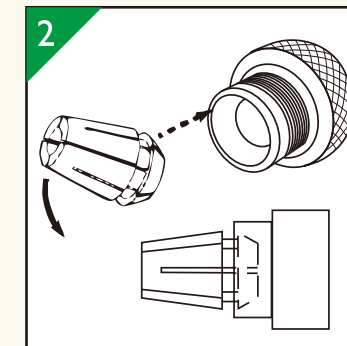
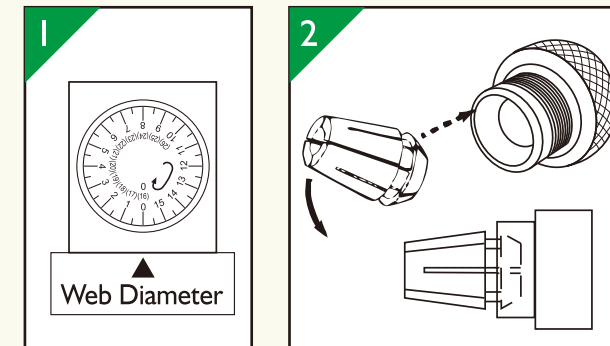
Mobility, Portable Design



Invisible Tool Box

GP-21

Drill Bit Grinder



OPERATION

1. Determine the drill material, then choose the proper grinding wheel, CBN grinding wheel is the standard accessory. (CBN for HSS material drills) (SD for carbide material drills)

2. Preset the scale of Web Adjustment Shelf; turn it by clockwise to the end and then turn counterclockwise at zero.

3.A. Choose the proper size of collet. Put collet into collet chuck.
*Insert collet into collet chuck by 45° angle.

B. The order of setting operation: Put the collet into collet chuck and screw in a little bit by clamping nut, then insert the drill through the collet chuck and push in until the drill is out of the nut about 5mm.

*Do not fully fasten the clamping nut with collet chuck, keep the drill able to be adjusted.

4.A. Adjust the scale of Web Adjustment Shelf according to the drill diameter.
B. Insert the chuck set into the Web Adjustment Shelf. Then connect it tightly. Turn it right to the end.

C. Plug the drill to the end and turn it right to the end.

D. Turn the chuck set right to the end and tightens it.

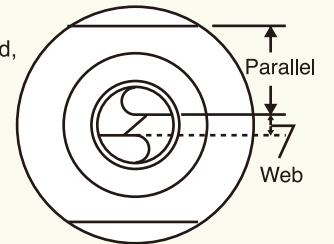
E. Turn the chuck set a little to the left and taking it out gently.

*Make sure that the cutting lip of drill is parallel with the slot of clamping nut before grinding job started. If it is not parallel, adjust it again.

Attention! If the cutting lip is downward, must increase the scale of Web Adjustment Shelf. If it is upward, please decrease the scale of the Web Adjustment Shelf.

*When the flute length of a drill becomes shorter, the web thickness of a drill would become thicker.

So, for the same diameter of drills, the shorter length of a drill, the higher scale of Web Adjustment Shelf need to be increased.



5. Turn the power switch on and wait until the motor rotation is stable (about 10 seconds), put the chuck set into the grinding shelf.

The slot of clamping nut must fit with the two pins of the grinding shelf. Insert the drill gently into grinding shelf until reach the grinding slip. Grind the drill by moving left and right until the noise stops. And then turn to the other side. Grind the drill with the same way.

*The grinding size of drill is 8mm~22mm.

*The point angle of drill is from 90° to 140°

*While grinding, don't hold the stem of the drill, it will affect the accuracy.

6. For grinding the center of drill and the web of drill, insert the chuck set into Web Thinning Shelf and move left and right until the noise stops. After that turn the chuck set to the other side and grinds it by the same way until noise stops.

*The insertion and ejection of the clamping nut set from Web Thinning Shelf, must make sure that the center part of the slot in clamping nut is fitted with the pin of Web Thinning Shelf.

7. Please clean the scraps on each grinding shelf after finishing the grinding job.

Remark: 1. For grinding the (long drill) deep hole drill, increase the scale of Web Adjustment Shelf.
2. The high spiral drill bit: Based on the size and specification, increase the adjustments on the scale (Diameterx2).

GP-5

Sheet Metal Drill Bit Grinder

Specialist in Grinding Drill Machine
Unique Design In The Market

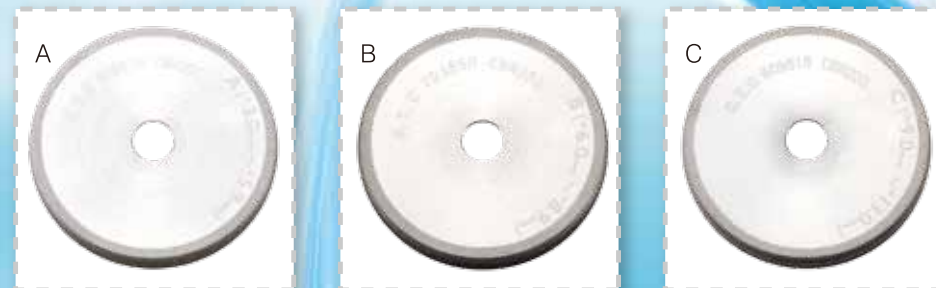


Special Design For Grinding Sheet Metal Drills



The Durable and High Quality Grinding Wheel

Please choose the appropriate grinding wheel for grinding different diameter of drills
A. $\Phi 3.0\text{mm} \sim \Phi 5.9\text{mm}$ Please Use A Grinding Wheel (CBN)
B. $\Phi 6.0\text{mm} \sim \Phi 8.9\text{mm}$ Please Use B Grinding Wheel (CBN)
C. $\Phi 9.0\text{mm} \sim \Phi 13.0\text{mm}$ Please Use C Grinding Wheel (CBN)
Optional:SD grinding wheel is available for sharpening carbide drills.



Model	GS-5
Drill Diameter	$\Phi 3\text{mm} \sim \Phi 13\text{mm}$
Point Angle	$165^\circ \sim 180^\circ$
Power Supply	AC110V 50/60Hz AC220V (Opt.)
R.P.M of Motor	5300 R.P.M.
Grinding Wheel	CBN#200
Weight	N.W 8.5Kg / G.W 9.5Kg
Machine Size	L:286mm W:133mm H:155mm
Packing Size	L:315mm W:140mm H:165mm
Type of Thinning	X Thinning
Standard Accessories	Collet X 11 pcs Collet Holder X 1 set Metal Shim 0.1mmx2 pcs / 0.3mmx1 pcs Hexagon Wrench 3mmx1 pcs / 4mmx1 pcs
Optional	SDC Grinding Wheel for Carbide Drills

GP-5

Sheet Metal Drill Bit Grinder

OPERATION

- A.) Please determine the drill diameter and choose the proper size of grinding wheel.
A. $\Phi 3.0\text{mm} \sim \Phi 5.9\text{mm}$ Please use the A Grinding Wheel
B. $\Phi 6.0\text{mm} \sim \Phi 8.9\text{mm}$ Please use the B Grinding Wheel
C. $\Phi 9.0\text{mm} \sim \Phi 13.0\text{mm}$ Please use the C Grinding Wheel
B.) Determine the drill material, then choose the proper grinding wheel, CBN grinding wheel is the standard accessory.

- Preset the scale of Web Adjustment Shelf; turn it by clockwise to the end and then turn counterclockwise at zero.

- Choose the proper size of collet. Put collet into collet chuck.
*Insert collet into collet chuck by 45° angle.

- The order of setting operation: Put the collet into collet chuck and screw in a little bit by clamping nut, then insert the drill through the collet chuck and push in until the drill is out of the nut about 5mm.
*Do not fully fasten the clamping nut with collet chuck, keep the drill able to be adjusted.

- A. Adjust the scale of Web Adjustment Shelf according to the drill diameter.

- B. Insert the chuck set into the Web Adjustment Shelf. Then connect it tightly. Turn it right to the end.

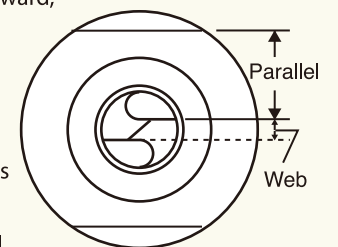
- C. Plug the drill to the end and turn it right to the end.

- D. Turn the chuck set right to the end and tightens it.

- E. Turn the chuck set a little to the left and taking it out gently.

- *Make sure that the cutting lip of drill is parallel with the slot of clamping nut before grinding job started. If it is not parallel, adjust it again.

Attention! If the cutting lip is downward, must increase the scale of Web Adjustment Shelf. If it is upward, please decrease the scale of the Web Adjustment Shelf.



*When the flute length of a drill becomes shorter, the web thickness of a drill would become thicker.

So, for the same diameter of drills, the shorter length of a drill, the higher scale of Web Adjustment Shelf need to be increased.

- Turn the power switch on and wait until the motor rotation is stable (about 10 seconds), put the chuck set into the grinding shelf. The slot of clamping nut must fit with the two pins of the grinding shelf. Insert the drill gently into grinding shelf until reach the grinding slip. Grind the drill by moving left and right until the noise stops. And then turn to the other side. Grind the drill with the same way.

*The grinding size of drill is 3mm~13mm.

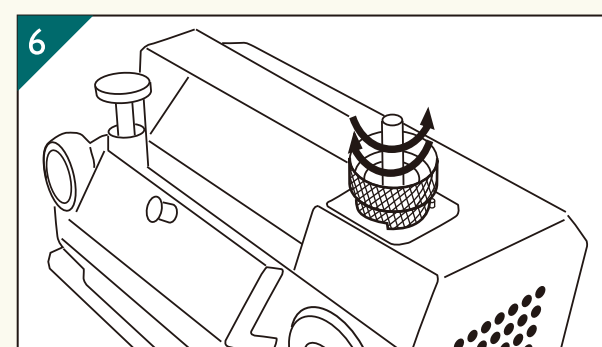
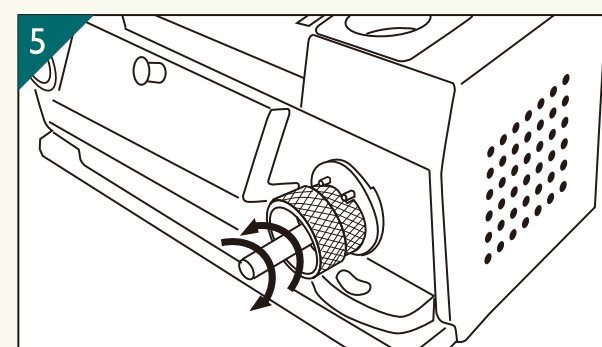
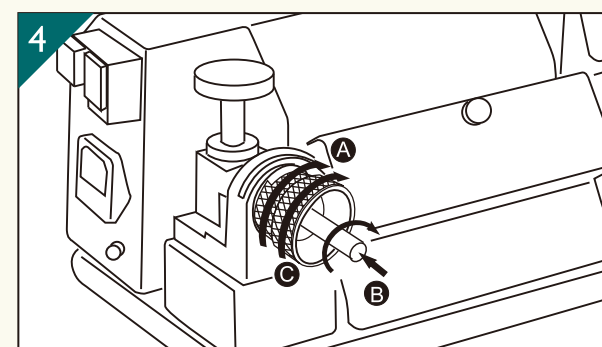
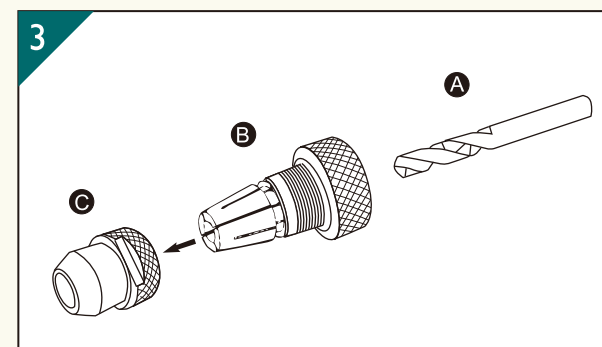
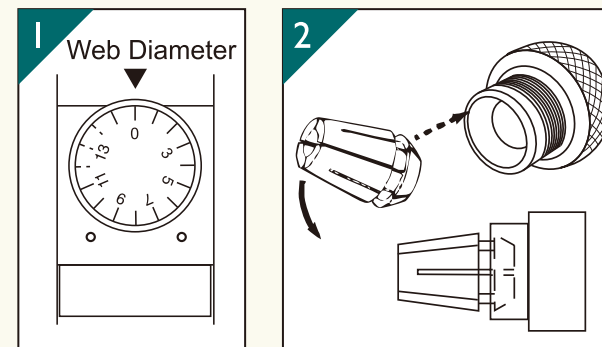
*The point angle of drill is from 165° to 180°

*While grinding, don't hold the stem of the drill, it will affect the accuracy.

- For grinding the center of drill and the web of drill, insert the chuck set into Web Thinning Shelf and move left and right until the noise stops. After that turn the chuck set to the other side and grinds it by the same way until noise stops.

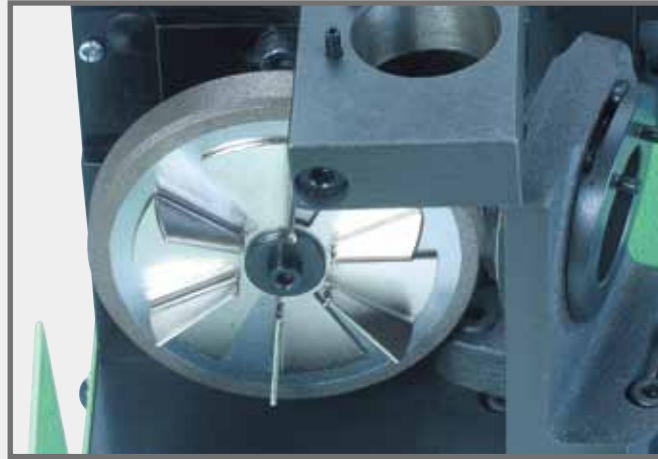
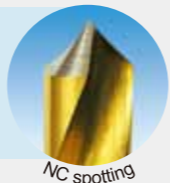
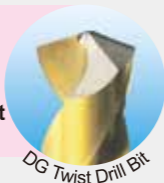
*The insertion and ejection of the clamping nut set from Web Thinning Shelf, must make sure that the center part of the slot in clamping nut is fitted with the pin of Web Thinning Shelf.

- Please clean the scraps on each grinding shelf after finishing the grinding job.



GP-9**Dual Core (DG & Twist) Drill Bit Grinder
Drill Bit Re-Sharpener**

High Quality Grinding Wheel

**GP-9 Twist Drills 90° ~ 140°**CBN Type
Available for twist drills,
HSS drills and so on**GP-9 DG Drills 118° ~ 140°**CBN Type
Φ 2mm ~ Φ 13mm Left Hand Drill Bit

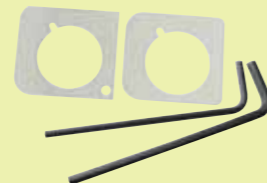
Chuck Set

GP-9 Optional AccessorySD
Grinding
WheelP-S
Collet SetsFor End
Mill Shank**P-S High Speed Drill Collet Set**

Diameter	Range Set
2.5 mm	2.0~2.5 mm
3.0 mm	2.6~3.0 mm
3.5 mm	3.1~3.5 mm
4.0 mm	3.6~4.0 mm
~12 mm	11.6~12 mm

GP-9 Standard Accessory

Special Design ~ 100% Accuracy



Pads & Wrenches

Standard Collet Sets**P-A . P-B Collet Sets**

P-A Standard Collet Set	
Diameter	Range Set
2 mm	2.0 mm
3 mm	2.1~3.0 mm
4 mm	3.1~4.0 mm
5 mm	4.1~5.0 mm
~13 mm	12.1~13.0 mm

P-B Imperial Collet Set	
Diameter	Range Set
2.5 mm	2.0~2.5 mm
3.5 mm	3.0~3.5 mm
4.5 mm	4.0~4.5 mm
5.5 mm	5.0~5.5 mm
~12 mm	12~12.5 mm

2009.09

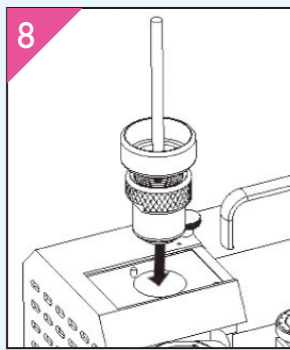
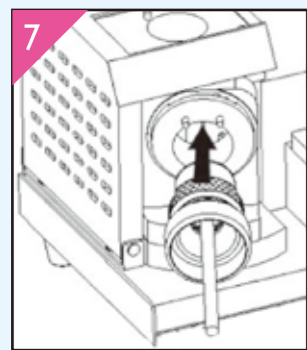
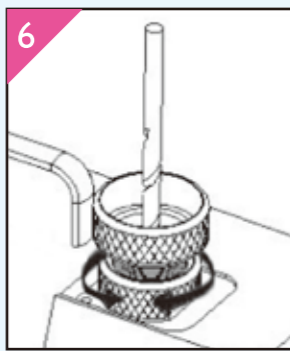
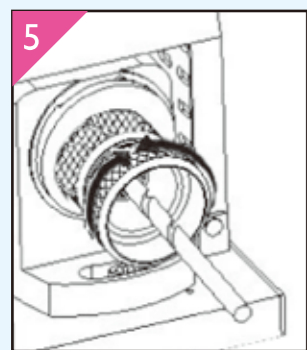
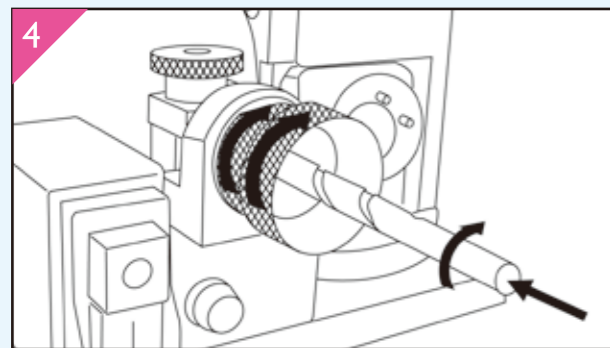
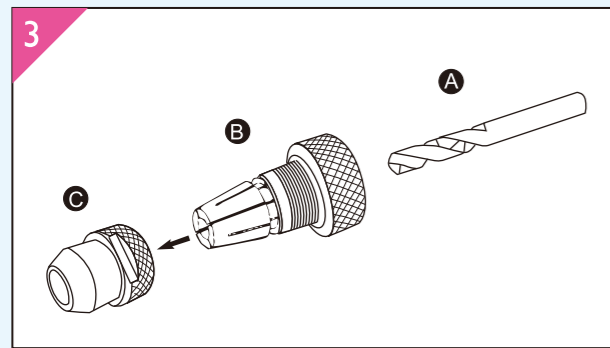
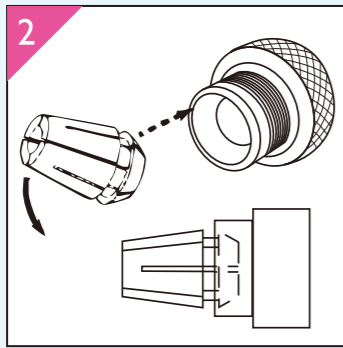
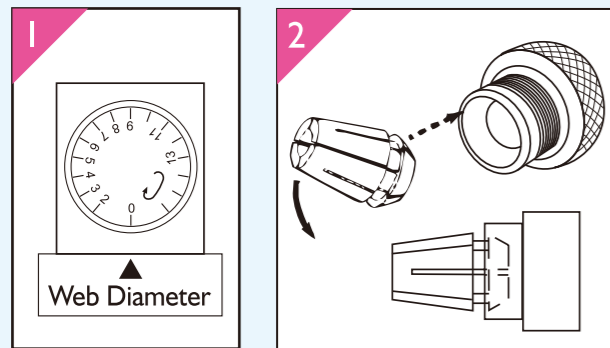
GP-9**Dual Core (DG & Twist) Drill Bit Grinder
Drill Bit Re-Sharpener****Quality Guarantee****Easy, Accuracy, Fast****Peerless**Easy Operation, Precision Grinding,
Quick & Economic**Mobility**

Portable Design For User Transport

High EfficiencyUse Diamond Grinding Wheel,
Durable & Stable**Considerable Design**Complete Collets Equipment In Interior
Compartment
Easily Manage**Super Function
Economy****Combo Machine ©DG Drills ©Twist Drills**

Model	GP-9	
Grinding Type	DG Drill	Twist Drill
Drill Diameter	Φ 2mm~13mm	Φ 2mm~13mm
Point Angle	118° ~140°	90° ~140°
Power Supply	AC110V 50/60Hz	AC220V(Opt.)
R.P.M of Motor	5300 R.P.M.	
Grinding Wheel	CBN#200	
Weight	N.W 12.5Kg / G.W 13Kg	
Machine Size	L:283mm W:145mm H:210mm	
Packing Size	L:360mm W:215mm H:265mm	
Type of Thinning	X Thinning	
Standard Accessories	Collet X 12 pcs Collet Holder X 1 set Metal Shim 0.1mmx2 pcs / 0.3mmx1 pcs Hexagon Wrench 3mmx1 pcs / 4mmx1 pcs	
	Optional SD Grinding Wheel for Carbide Drills	

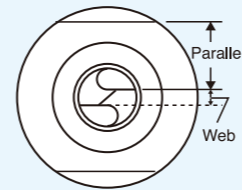




DG Drill Bit

OPERATION

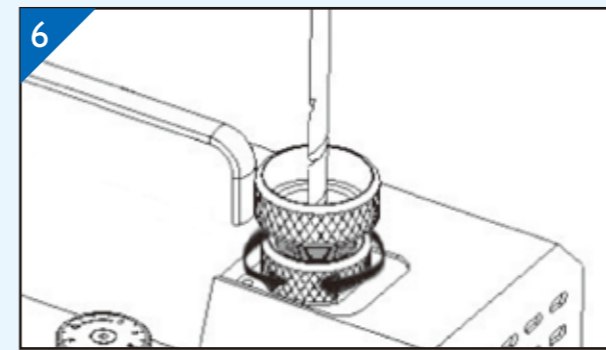
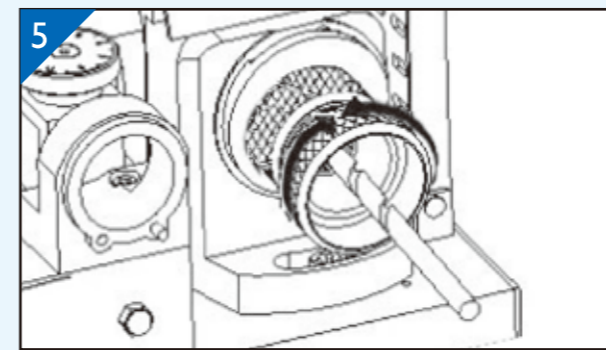
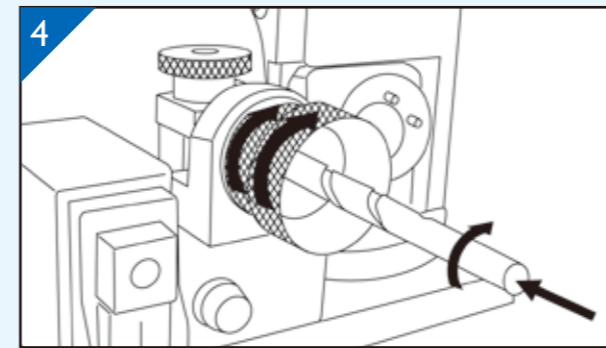
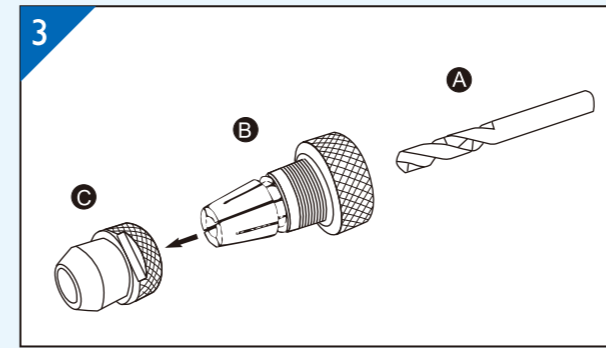
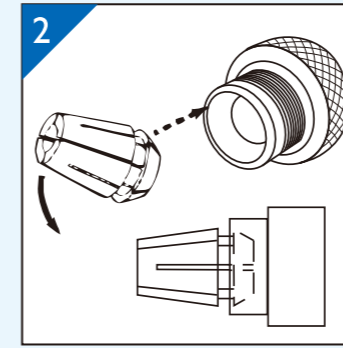
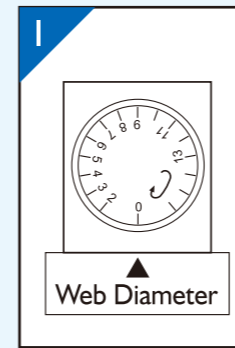
- Determine the drill material, then choose the proper grinding wheel, CBN grinding wheel is the standard accessory. (CBN for HSS material drills) (SD for carbide material drills)
- Preset the scale of Web Adjustment Shelf ; turn it by clockwise to the end and then turn counterclockwise at zero.
- A. Choose the proper size of collet. Put collet into collet chuck.
*Insert collet into collet chuck by 45° angle.
B. The order of setting operation: Put the collet into collet chuck and screw in a little bit by clamping nut, then insert the drill through the collet chuck and push in until the drill is out of the nut about 5mm.
*Do not fully fasten the clamping nut with collet chuck, keep the drill able to be adjusted.
- A. Adjust the scale of the left hand side Web Adjustment Shelf according to the drill diameter.
B. Insert the chuck set into the left hand side Web Adjustment Shelf. Then connect it tightly. Turn it right to the end.
C. Plug the drill to the end and turn it right to the end.
D. Turn the chuck set right to the end and tightens it.
E. Turn the chuck set a little to the left and taking it out gently.
*Make sure that the cutting lip of drill is parallel with the slot of clamping nut before grinding job started. If it is not parallel, adjust it again.



Attention! If the cutting lip is downward, must increase the scale of Web Adjustment Shelf. If it is upward, please decrease the scale of the Web Adjustment Shelf.
*When the flute length of a drill becomes shorter, the web thickness of a drill would become thicker. So, for the same diameter of drills, the shorter length of a drill, the higher scale of Web Adjustment Shelf need to be increased.

- Turn the power switch on and wait until the motor rotation is stable (about 10 seconds) , put the chuck set into the right side grinding shelf. The slot of clamping nut must fit with the two pins of the right side grinding shelf. Insert the drill gently into grinding shelf until reach the grinding slip. Grind the drill by moving left and right until the noise stops. And then turn to the other side. Grind the drill with the same way.
*The smallest grinding size of drill is 2mm.
*The point angle of drill is from 118° to 140°
*While grinding, don't hold the stem of the drill, it will affect the accuracy.
- For grinding the center of drill and the web of drill, insert the chuck set into the right side Web Thinning Shelf and move left and right until the noise stops. After that turn the chuck set to the other side and grinds it with the same way until noise stops.
*The insertion and ejection of the clamping nut set from Web Thinning Shelf, must make sure that the center part of the slot in clamping nut is fitted with the pin of Web Thinning Shelf.
- Adjust the second face grinding shelf (the left underside shelf) angle as same as the first grinding shelf (the right underside shelf). Put the chuck set into the second face grinding shelf. The slot of clamping nut must fit with the two pins of the second face grinding shelf. Insert the drill gently into grinding shelf until reach the grinding slip. Grind the drill by moving left and right until the noise stops. And then turn to the other side. Grind the drill with the same way.
*The point angle of the second face grinding shelf (the left underside shelf) is from 118° to 140°, when operating, the point angle must adjusted to be as same as the first grinding shelf (the right underside shelf) angle.
- Put the chuck set into the third face grinding shelf (the left topside shelf). The slot of clamping nut must fit with the two pins of the second face grinding shelf. Insert the drill gently into grinding shelf until reach the grinding slip. Grind the drill by moving left and right until the noise stops. And then turn to the other side. Grind the drill with the same way.
- Please clean the scraps on each grinding shelf after finishing the grinding job.

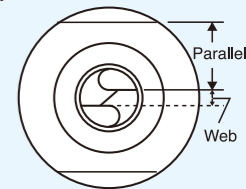
Remark: 1. For grinding the (long drill) deep hole drill, increase the scale of Web Adjustment Shelf.
2. The high spiral drill bit: Based on the size and specification, increase the adjustments on the scale (Diameterx2).



Twist Drill Bit

OPERATION

- Determine the drill material, then choose the proper grinding wheel, CBN grinding wheel is the standard accessory. (CBN for HSS material drills) (SD for carbide material drills)
- Preset the scale of Web Adjustment Shelf ; turn it by clockwise to the end and then turn counterclockwise at zero.
- A. Choose the proper size of collet. Put collet into collet chuck.
*Insert collet into collet chuck by 45° angle.
B. The order of setting operation: Put the collet into collet chuck and screw in a little bit by clamping nut, then insert the drill through the collet chuck and push in until the drill is out of the nut about 5mm.
*Do not fully fasten the clamping nut with collet chuck, keep the drill able to be adjusted.
- A. Adjust the scale of the right hand side Web Adjustment Shelf according to the drill diameter.
B. Insert the chuck set into the Web Adjustment Shelf. Then connect it tightly. Turn it right to the end.
C. Plug the drill to the end and turn it right to the end.
D. Turn the chuck set right to the end and tightens it.
E. Turn the chuck set a little to the left and taking it out gently.
*Make sure that the cutting lip of drill is parallel with the slot of clamping nut before grinding job started. If it is not parallel, adjust it again.



Attention! If the cutting lip is downward, must increase the scale of Web Adjustment Shelf. If it is upward, please decrease the scale of the Web Adjustment Shelf.
*When the flute length of a drill becomes shorter, the web thickness of a drill would become thicker. So, for the same diameter of drills, the shorter length of a drill, the higher scale of Web Adjustment Shelf need to be increased.

- Turn the power switch on and wait until the motor rotation is stable (about 10 seconds) , put the chuck set into the right side grinding shelf. The slot of clamping nut must fit with the two pins of the right side grinding shelf. Insert the drill gently into grinding shelf until reach the grinding slip. Grind the drill by moving left and right until the noise stops. And then turn to the other side. Grind the drill with the same way.
*The smallest grinding size of drill is 2mm.
*The point angle of drill is from 90° to 140°
*While grinding, don't hold the stem of the drill, it will affect the accuracy.
- For grinding the center of drill and the web of drill, insert the chuck set into the right side Web Thinning Shelf and move left and right until the noise stops. After that turn the chuck set to the other side and grinds it with the same way until noise stops.
*The insertion and ejection of the clamping nut set from Web Thinning Shelf, must make sure that the center part of the slot in clamping nut is fitted with the pin of Web Thinning Shelf.
- Please clean the scraps on each grinding shelf after finishing the grinding job.

Remark: 1. For grinding the (long drill) deep hole drill, increase the scale of Web Adjustment Shelf.
2. The high spiral drill bit: Based on the size and specification, increase the adjustments on the scale (Diameterx2).

GP-6

End Mill Resharpener

Super Simple / Super Easy / Super Fast / Super Efficiency



Model	GP-6
Drill Diameter	Φ 3mm~ Φ 12mm
Power Supply	AC110V 50/60Hz AC220V (Opt.)
R.P.M of Motor	5300 R.P.M.
Grinding Wheel	SD#200
Weight	N.W 14.7Kg / G.W 15.7Kg
Machine Size	L:300mm W:165mm H:245mm
Packing Size	L:380mm W:245mm H:325mm
Standard Accessories	Collets X 6 pcs
	Bushings X 6 pcs
	Chuck Set: 3 sets (6pcs)
	Hexagon Wrench 3mmx1 pcs / 4mmx1 pcs
Optional Accessories: CBN Grinding Wheel	

Money / Time / Cost
Resource Saving Machine
– Your Best Choice

- Fast grinding
Regrind an Endmill within one minute
- Easy to learn
- Economic price

Most Important:
Accuracy Assurance



GP-26

End Mill Resharpener

Super Simple / Super Easy / Super Fast / Super Efficiency



Money / Time / Cost
Resource Saving Machine
– Your Best Choice

- Fast grinding
Regrind an Endmill within one minute
- Easy to learn
- Economic price

Model	GP-26
End Mill Diameter	Φ 12mm~ Φ 26mm
Power Supply	AC110V 50/60Hz AC220V (Opt.)
R.P.M of Motor	4600 R.P.M.
Grinding Wheel	Standard: SD#200 For Carbide Option: CBN#200 for HSS
Weight of Machine	28 Kg
Weight of Auxiliary	44 Kgs
Machine Packing Size	L:510mm W:290mm H:270mm
Desk Packing Size	L:710mm W:400mm H:860mm
Standard Accessories	Collets X 16 pcs
	Holder Chuck Set /4 sets
	Bushing / 6 pcs
	Hexagon Wrench 3mmx1 pcs / 5mmx1 pcs
Standard Equipment: Wooden Box	
Optional Equipment: Metal Desk and Dust Collector	



Cutting Machine

GP-13

Cutting Machine

Model:



1. Convenient design with accurate cutting.
2. Cutting range from 3-16, the maximum length of the material is 15mm.
3. Rotation also available on the material to decrease the cutting time and the temperature.
4. Faster the material replacing speed with the 3 jaws spindle.





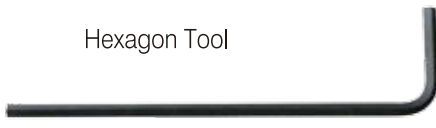


- ⊙ Carbide End Mill cutting
 - Using the grinding wheel E100SDC diameter 100
 - Cutting of 10mm carbide end mill lasts around 55 seconds.
 - Cutting of 16mm carbide end mill lasts around 100 seconds



- ⊙ HSS End Mill cutting
 - Using the grinding wheel E60WA diameter 100
 - Cutting of 10mm HSS end mill lasts around 60 seconds.
 - Cutting of 16mm HSS end mill lasts around 110 seconds

GP-13 Standard accessories

Standard accessories		Optional accessories
		
E100SDC-115 (For carbide) 1 pcs	E60WA(φ 100) 5 pcs	E100CBN-115 (For HSS)
		
Spindle Tool	Hexagon Tool	

Model	GP-13
Power Supply	AC110V 50/60Hz AC220V(Opt.)
Grinding Wheel Motor	250W / 5000rpm
Spindle Motor	250W / 150rpm
Cutting Range	Φ 3~16mm carbide, HSS
	E100SDC-115 (For carbide) E100CBN-115 (For HSS)
Weight	N.W 27.5Kg G.W 29.5Kg
Machine Size	L:380mm W:230mm H:220mm
Packing Size	L:480mm W:320mm H:330mm
Standard Accessories	E100SDC-115 (For carbide) X 1 pcs E60WA(φ 100) X 5 pcs Spindle Tool X 1 pcs Hexagon Tool X 1 pcs

